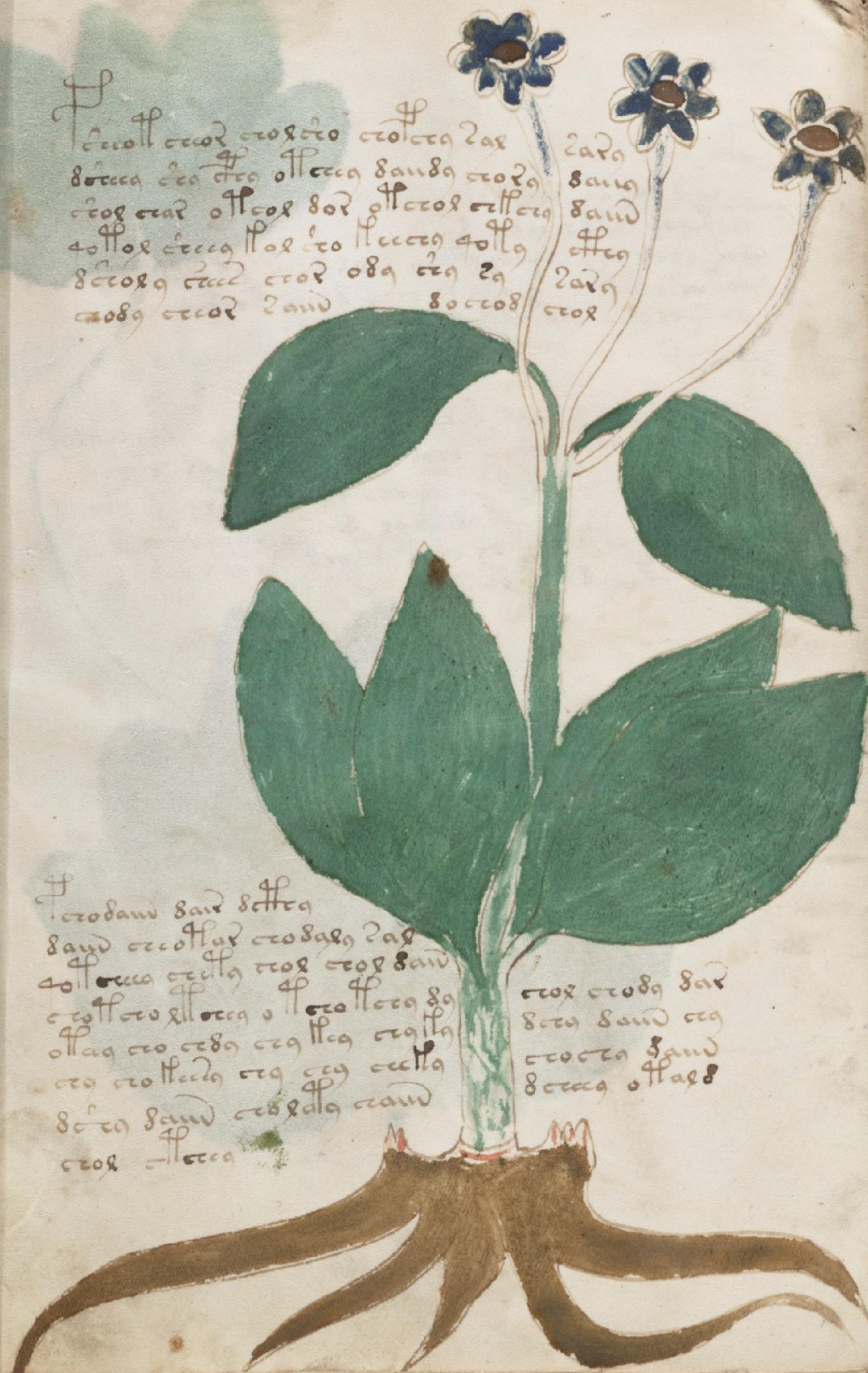


¶ Tæand oðg æccand cæol dand ædga  
æolæol cæol cæol dga dga dæadand  
dæol cæol æg cæand æccæg cæol dand oðand  
æolæol æccæg æccæand cæol dand æccædæ  
dand oðæg æolæolæg

¶ Tæol æccædæ cæol cæolæand cæol cæol ædga cæolæol  
æccædæ æccæol æccæand cæol cæol cæol æccæ æccæ  
æccææg æg æccæol æccæg æccæ æccææg æccæ æccæ  
æccæolæol æccæand æccææ cæol dand æccææ æccææ  
æccæ æccææ æccææ æccæ æccææ æccææ æccææ  
æccæ æccææ dand dandæ









A botanical illustration of a plant, likely a species of daisy or similar flower. The plant has a central stem with several branches. At the top of the stem is a large, flat, circular head, possibly a flower or a seed head. Below this head, there are several green, pointed, and hairy structures (possibly buds or fruits) arranged along the stem. The drawing is done in a simple, sketchy style with some color washes. The background is a light, textured surface.



¶ Terebinthina dicitur quod etiam galega dicitur quod etiam galega dicitur  
etiam dicitur galega dicitur etiam dicitur galega dicitur etiam dicitur  
etiam dicitur galega dicitur etiam dicitur galega dicitur etiam dicitur  
etiam dicitur galega dicitur etiam dicitur galega dicitur etiam dicitur  
etiam dicitur galega dicitur etiam dicitur galega dicitur etiam dicitur  
etiam dicitur galega dicitur etiam dicitur galega dicitur etiam dicitur

¶ Terebinthina dicitur quod etiam galega dicitur quod etiam galega dicitur  
etiam dicitur galega dicitur etiam dicitur galega dicitur etiam dicitur  
etiam dicitur galega dicitur etiam dicitur galega dicitur etiam dicitur  
etiam dicitur galega dicitur etiam dicitur galega dicitur etiam dicitur  
etiam dicitur galega dicitur etiam dicitur galega dicitur etiam dicitur  
etiam dicitur galega dicitur etiam dicitur galega dicitur etiam dicitur









6  
2  
3  
4  
5



44  
 1. crotter  
 2. oterrotto  
 3. drot drot  
 44  
 5. crotter  
 6. dand 40  
 7. crotter  
 8. cro dand  
 9. crotter  
 10. crotter  
 11. stand  
 12. crotter





A hand-drawn illustration of a large, stylized flower with a yellow center and blue petals, and two green leaves with blue spots. The drawing is on aged paper with handwritten text in the background.





Hæraðo hærað crotteðo gollteðo ofteðo gollto crot ofte fardar  
 Hæroð and æccro oðland teðo gollæro cæro ællo theðo cæro oðland  
 Hæroðo gollteðo cætteðo teðteðo særeðo gllæro gollteðo oðland oðlæro  
 særeðo gollteðo oðland oðteðo oð oðlæro ofteðo oðlæro cætteðo of  
 gæro Hæro cætteðo golland golland oðteðo cæro cætteðo oðlæro  
 særeðo Hæro oðlæro cæro gollteðo oðlæro oðteðo oðteðo gollteðo cætteðo  
 Hæro and oðland of oðland gllæro særeðo cæro gollteðo Hæro særeðo  
 gllæro oðland oðlæro gollteðo gllæro Hæro cætteðo oðland oðland goll  
 gllæro and cæro cæro Hæro oðland oðland ællo  
 særeðo oðland oðteðo oðteðo gllæro and æro  
 særeðo Hæro gllæro Hæro





Hecodan qollan o'rran q'rran  
 decodan effecodan effecodan  
 gdecodan effecodan effecodan  
 dan effecodan effecodan  
 Hecodan qodan effecodan qodan  
 qodan effecodan qodan  
 qodan effecodan qodan  
 o'rran o'rran effecodan qodan  
 Hecodan qodan effecodan qodan  
 qodan effecodan qodan  
 Hecodan effecodan qodan  
 qodan effecodan qodan  
 dan effecodan qodan  
 qodan effecodan qodan









Thollendz qello qllaw claz qolqband qllaz qllaw claz qllaz  
qllaz claz qllaz qllaz qllaz qllaz qllaz qllaz qllaz qllaz  
qllaz qllaz qllaz qllaz qllaz qllaz qllaz qllaz qllaz qllaz  
qllaz qllaz qllaz qllaz qllaz qllaz qllaz qllaz qllaz qllaz  
qllaz qllaz qllaz qllaz qllaz qllaz qllaz qllaz qllaz qllaz  
qllaz qllaz qllaz qllaz qllaz qllaz qllaz qllaz qllaz qllaz  
qllaz qllaz qllaz qllaz qllaz qllaz qllaz qllaz qllaz qllaz  
qllaz qllaz qllaz qllaz qllaz qllaz qllaz qllaz qllaz qllaz  
qllaz qllaz qllaz qllaz qllaz qllaz qllaz qllaz qllaz qllaz





11  
 12  
 13  
 14  
 15  
 16  
 17  
 18  
 19  
 20  
 21  
 22  
 23  
 24  
 25  
 26  
 27  
 28  
 29  
 30  
 31  
 32  
 33  
 34  
 35  
 36  
 37  
 38  
 39  
 40  
 41  
 42  
 43  
 44  
 45  
 46  
 47  
 48  
 49  
 50  
 51  
 52  
 53  
 54  
 55  
 56  
 57  
 58  
 59  
 60  
 61  
 62  
 63  
 64  
 65  
 66  
 67  
 68  
 69  
 70  
 71  
 72  
 73  
 74  
 75  
 76  
 77  
 78  
 79  
 80  
 81  
 82  
 83  
 84  
 85  
 86  
 87  
 88  
 89  
 90  
 91  
 92  
 93  
 94  
 95  
 96  
 97  
 98  
 99  
 100  
 101  
 102  
 103  
 104  
 105  
 106  
 107  
 108  
 109  
 110  
 111  
 112  
 113  
 114  
 115  
 116  
 117  
 118  
 119  
 120  
 121  
 122  
 123  
 124  
 125  
 126  
 127  
 128  
 129  
 130  
 131  
 132  
 133  
 134  
 135  
 136  
 137  
 138  
 139  
 140  
 141  
 142  
 143  
 144  
 145  
 146  
 147  
 148  
 149  
 150  
 151  
 152  
 153  
 154  
 155  
 156  
 157  
 158  
 159  
 160  
 161  
 162  
 163  
 164  
 165  
 166  
 167  
 168  
 169  
 170  
 171  
 172  
 173  
 174  
 175  
 176  
 177  
 178  
 179  
 180  
 181  
 182  
 183  
 184  
 185  
 186  
 187  
 188  
 189  
 190  
 191  
 192  
 193  
 194  
 195  
 196  
 197  
 198  
 199  
 200  
 201  
 202  
 203  
 204  
 205  
 206  
 207  
 208  
 209  
 210  
 211  
 212  
 213  
 214  
 215  
 216  
 217  
 218  
 219  
 220  
 221  
 222  
 223  
 224  
 225  
 226  
 227  
 228  
 229  
 230  
 231  
 232  
 233  
 234  
 235  
 236  
 237  
 238  
 239  
 240  
 241  
 242  
 243  
 244  
 245  
 246  
 247  
 248  
 249  
 250  
 251  
 252  
 253  
 254  
 255  
 256  
 257  
 258  
 259  
 260  
 261  
 262  
 263  
 264  
 265  
 266  
 267  
 268  
 269  
 270  
 271  
 272  
 273  
 274  
 275  
 276  
 277  
 278  
 279  
 280  
 281  
 282  
 283  
 284  
 285  
 286  
 287  
 288  
 289  
 290  
 291  
 292  
 293  
 294  
 295  
 296  
 297  
 298  
 299  
 300  
 301  
 302  
 303  
 304  
 305  
 306  
 307  
 308  
 309  
 310  
 311  
 312  
 313  
 314  
 315  
 316  
 317  
 318  
 319  
 320  
 321  
 322  
 323  
 324  
 325  
 326  
 327  
 328  
 329  
 330  
 331  
 332  
 333  
 334  
 335  
 336  
 337  
 338  
 339  
 340  
 341  
 342  
 343  
 344  
 345  
 346  
 347  
 348  
 349  
 350  
 351  
 352  
 353  
 354  
 355  
 356  
 357  
 358  
 359  
 360  
 361  
 362  
 363  
 364  
 365  
 366  
 367  
 368  
 369  
 370  
 371  
 372  
 373  
 374  
 375  
 376  
 377  
 378  
 379  
 380  
 381  
 382  
 383  
 384  
 385  
 386  
 387  
 388  
 389  
 390  
 391  
 392  
 393  
 394  
 395  
 396  
 397  
 398  
 399  
 400  
 401  
 402  
 403  
 404  
 405  
 406  
 407  
 408  
 409  
 410  
 411  
 412  
 413  
 414  
 415  
 416  
 417  
 418  
 419  
 420  
 421  
 422  
 423  
 424  
 425  
 426  
 427  
 428  
 429  
 430  
 431  
 432  
 433  
 434  
 435  
 436  
 437  
 438  
 439  
 440  
 441  
 442  
 443  
 444  
 445  
 446  
 447  
 448  
 449  
 450  
 451  
 452  
 453  
 454  
 455  
 456  
 457  
 458  
 459  
 460  
 461  
 462  
 463  
 464  
 465  
 466  
 467  
 468  
 469  
 470  
 471  
 472  
 473  
 474  
 475  
 476  
 477  
 478  
 479  
 480  
 481  
 482  
 483  
 484  
 485  
 486  
 487  
 488  
 489  
 490  
 491  
 492  
 493  
 494  
 495  
 496  
 497  
 498  
 499  
 500  
 501  
 502  
 503  
 504  
 505  
 506  
 507  
 508  
 509  
 510  
 511  
 512  
 513  
 514  
 515  
 516  
 517  
 518  
 519  
 520  
 521  
 522  
 523  
 524  
 525  
 526  
 527  
 528  
 529  
 530  
 531  
 532  
 533







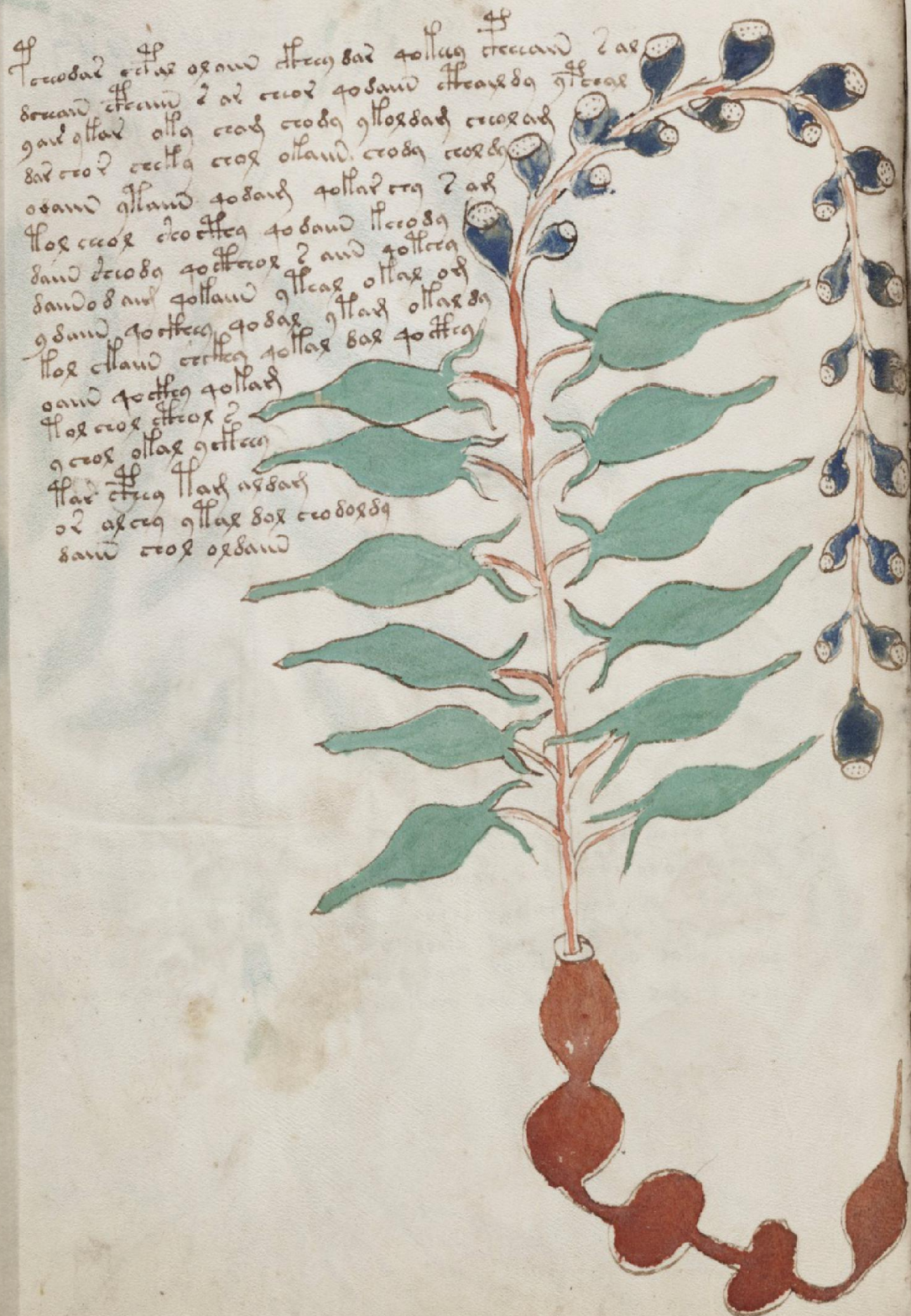














A traditional Chinese painting of a plant, likely a species of bellflower (Campanula). The plant features a thick, gnarled, brown root system that branches out at the base. Several green, lobed leaves are attached to the stems. Three prominent red, bell-shaped flowers are shown, each with a blue and white center. The background is a plain, light-colored surface.



Tharaberdg ocdm recteg  
oced yllercg ollerdg qoand  
qallercg o? and qool al erdg  
oller erllerdg ercdg llcgt al ag  
qolland erand qllaw qllad o?dg  
qllaw dand qllaw erllg dandg

offordand dardg  
ollerdg qllerd  
rad and ag llardg  
qerdg qolland o?dg  
dand ercdg llardg





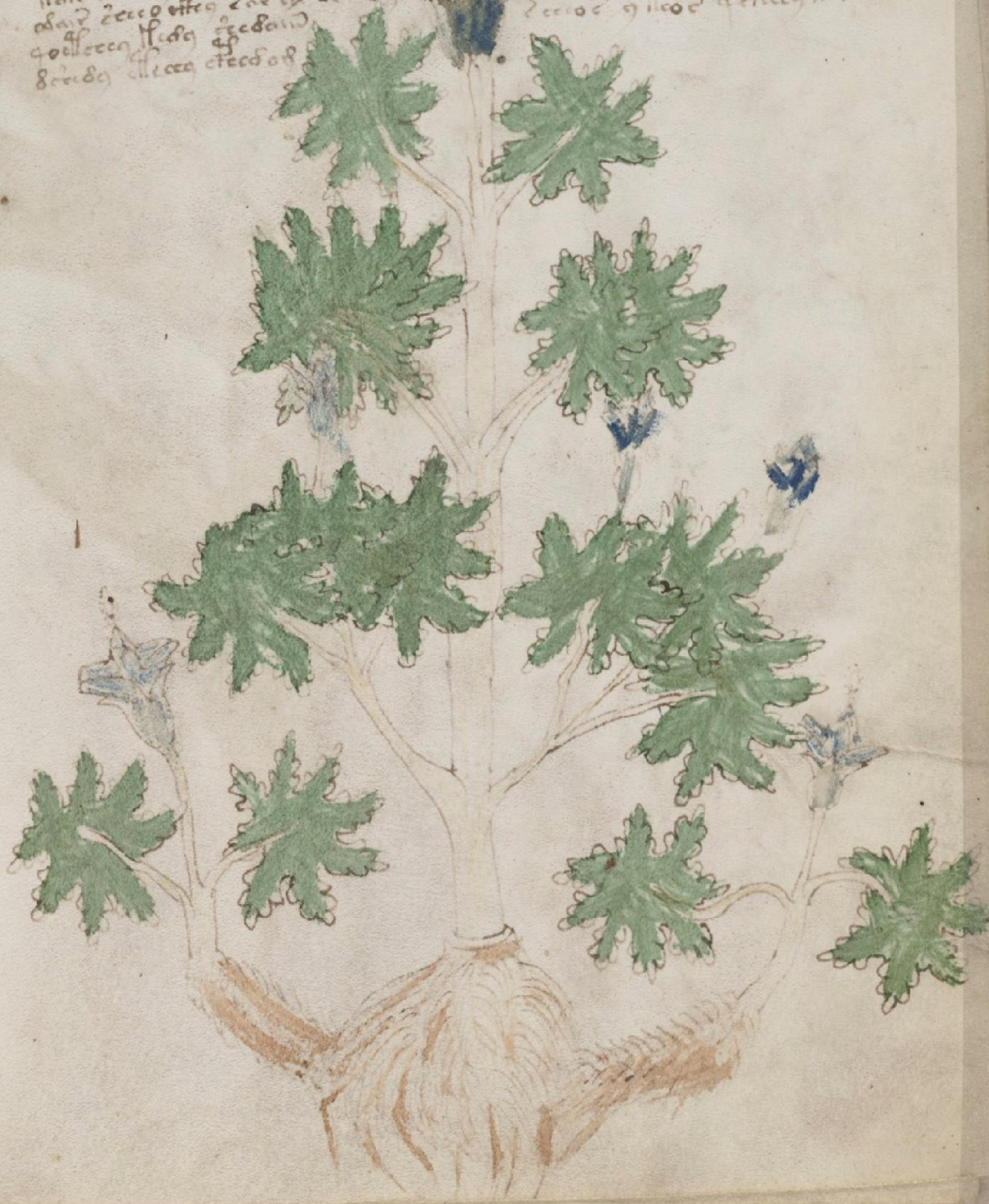
A watercolor illustration of a plant, possibly a species of cactus or succulent. The plant has a central, light-colored stem that branches out into two main arms. Each arm terminates in a large, dark, rounded fruit or seed pod. From the base of each fruit, a cluster of green, spiky leaves radiates outwards. The background is a light beige or cream color, with some faint, handwritten text in the upper left corner that appears to be "20110800" and "20110800". The overall style is that of a botanical sketch or a watercolor painting.



A botanical illustration of a plant, possibly a palm or a similar species, with a thick, reddish-brown, gnarled root system. The stem is green and branches into three large, fan-shaped, green leaves with serrated edges. The plant is set against a background of handwritten text in a cursive script, likely a historical manuscript. The text is written in a dark ink and appears to be a mix of Latin and possibly other languages, with some words being repeated. The overall style is that of a historical botanical manuscript, with a focus on the plant's morphology and its association with specific text.



57  
Pocastera vband eueat eueat eueat eueat eueat eueat eueat eueat eueat eueat  
band and eueat eueat eueat eueat eueat eueat eueat eueat eueat eueat  
qalluoda eueat qalluoda eueat qalluoda eueat qalluoda eueat qalluoda eueat  
eueat eueat eueat eueat qalluoda eueat qalluoda eueat qalluoda eueat  
qalluoda band eueat eueat eueat eueat eueat eueat eueat eueat eueat eueat  
eueat eueat qalluoda eueat eueat eueat eueat eueat eueat eueat eueat eueat  
band eueat qalluoda eueat eueat eueat eueat eueat eueat eueat eueat eueat  
eueat eueat qalluoda eueat eueat eueat eueat eueat eueat eueat eueat eueat  
band eueat eueat eueat eueat eueat eueat eueat eueat eueat eueat  
qalluoda eueat eueat eueat eueat eueat eueat eueat eueat eueat eueat  
eueat eueat eueat eueat eueat eueat eueat eueat eueat eueat











58r



[illegible]

4  
 Toes thes plecting salad glesdy coar ahead stand and  
 sand recotting gles dyaly golar golleng ottand ottad or ead  
 Herod oot that golar golleng gollar coor golland pad oclaxced  
 Forges golly gollar golleng lly gilar oocel olar Hor oxxcedy  
 doare coor ad ceeg

[illegible]









¶ Peritica dy  
dard cruth vada  
¶ al cr. oil vada  
¶ laceda allat crida  
sceda allcosa galls  
90 allera cruthacta

¶ scetaw crutha fola lal crida  
¶ lica galls and cruthera dard  
¶ cruthera  
¶ lica crutha galls lica  
¶ dard crutha cruthera lica  
¶ lica crutha cruthera



Handwritten text in a medieval script, likely Old Norse or Old English, arranged in columns. The text is dense and appears to be a list or a series of entries, possibly related to a manuscript or a collection of items. The script is highly stylized and characteristic of the period.

Handwritten text at the bottom of the page, possibly a signature or a note.



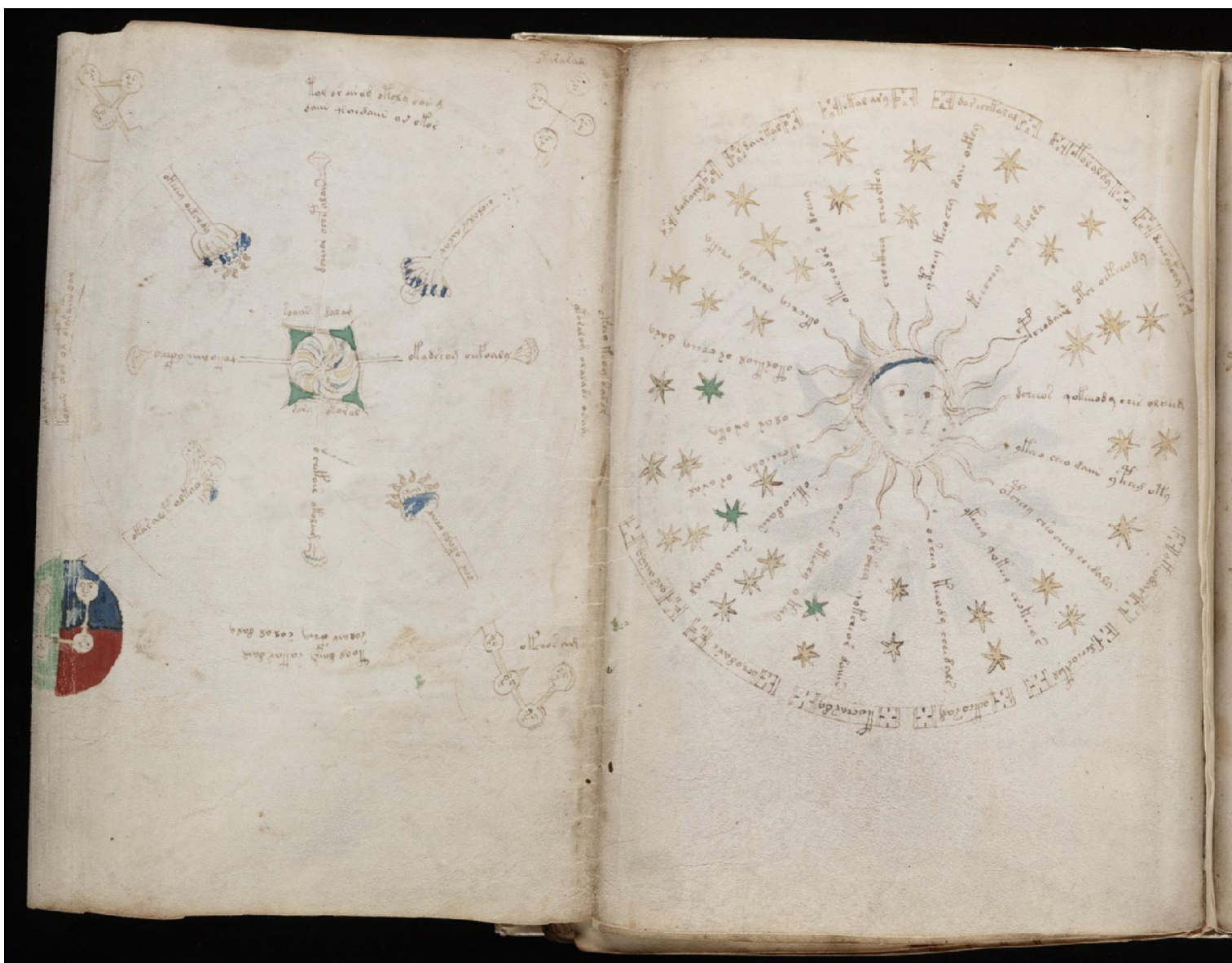




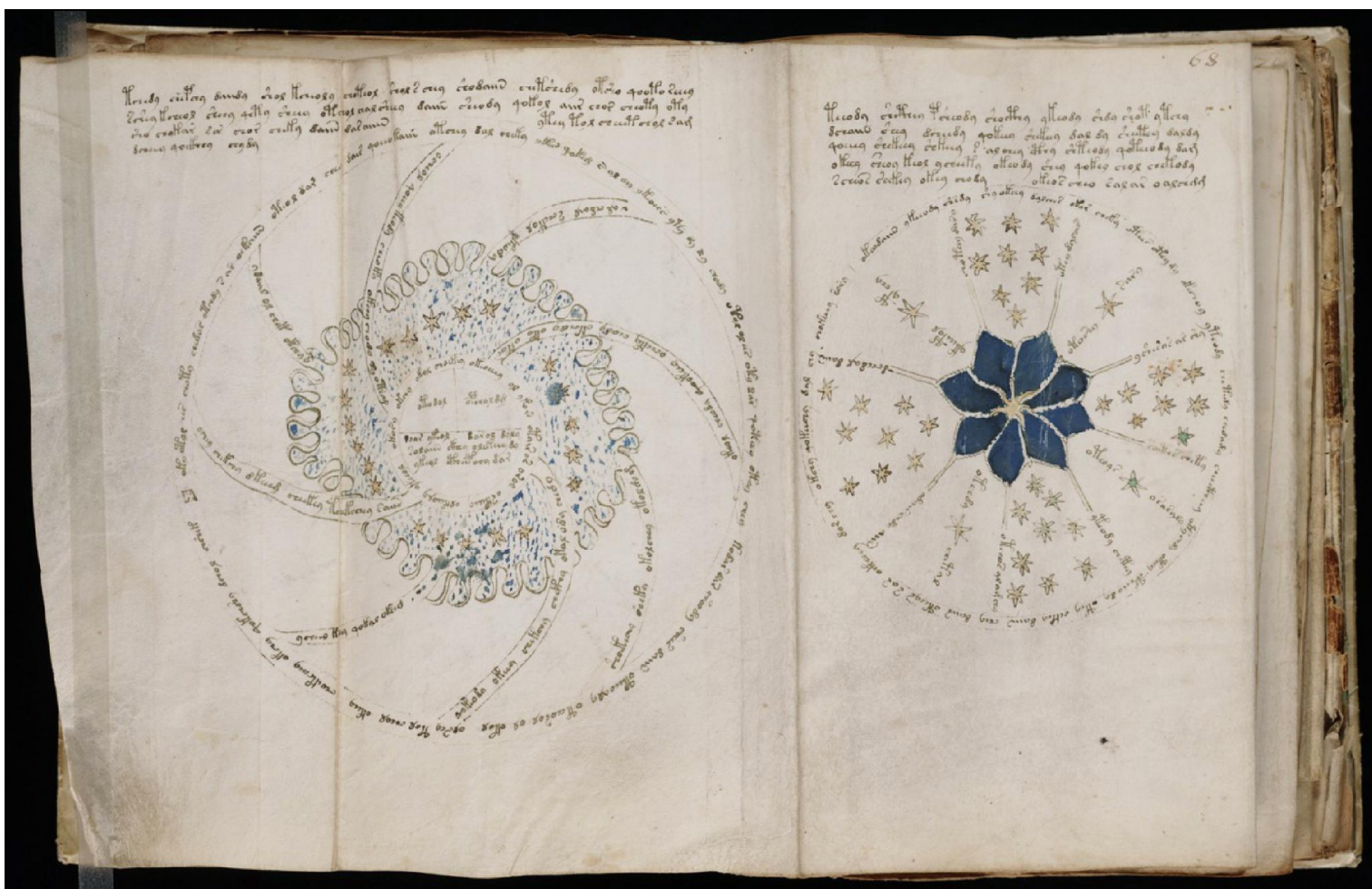








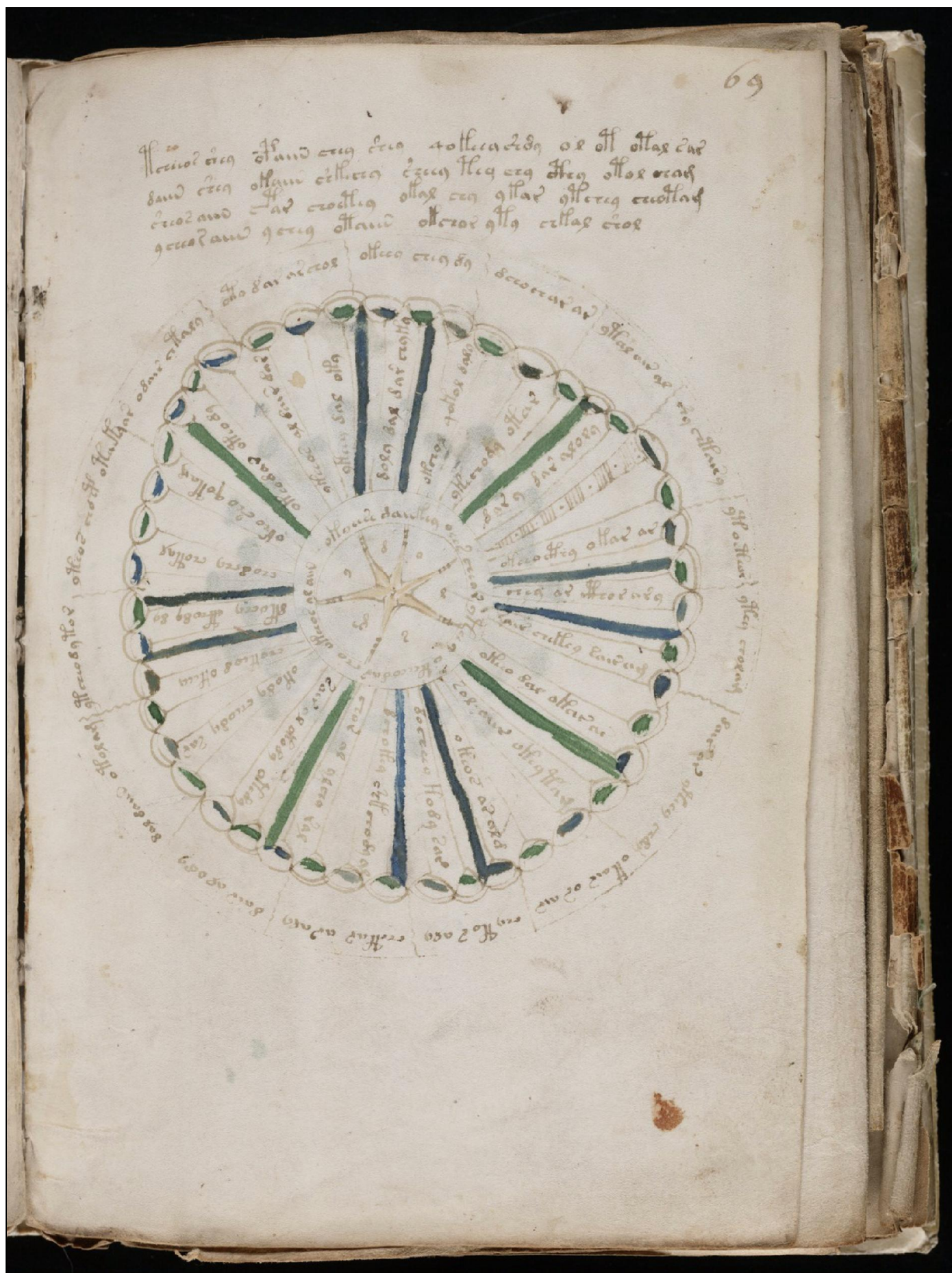




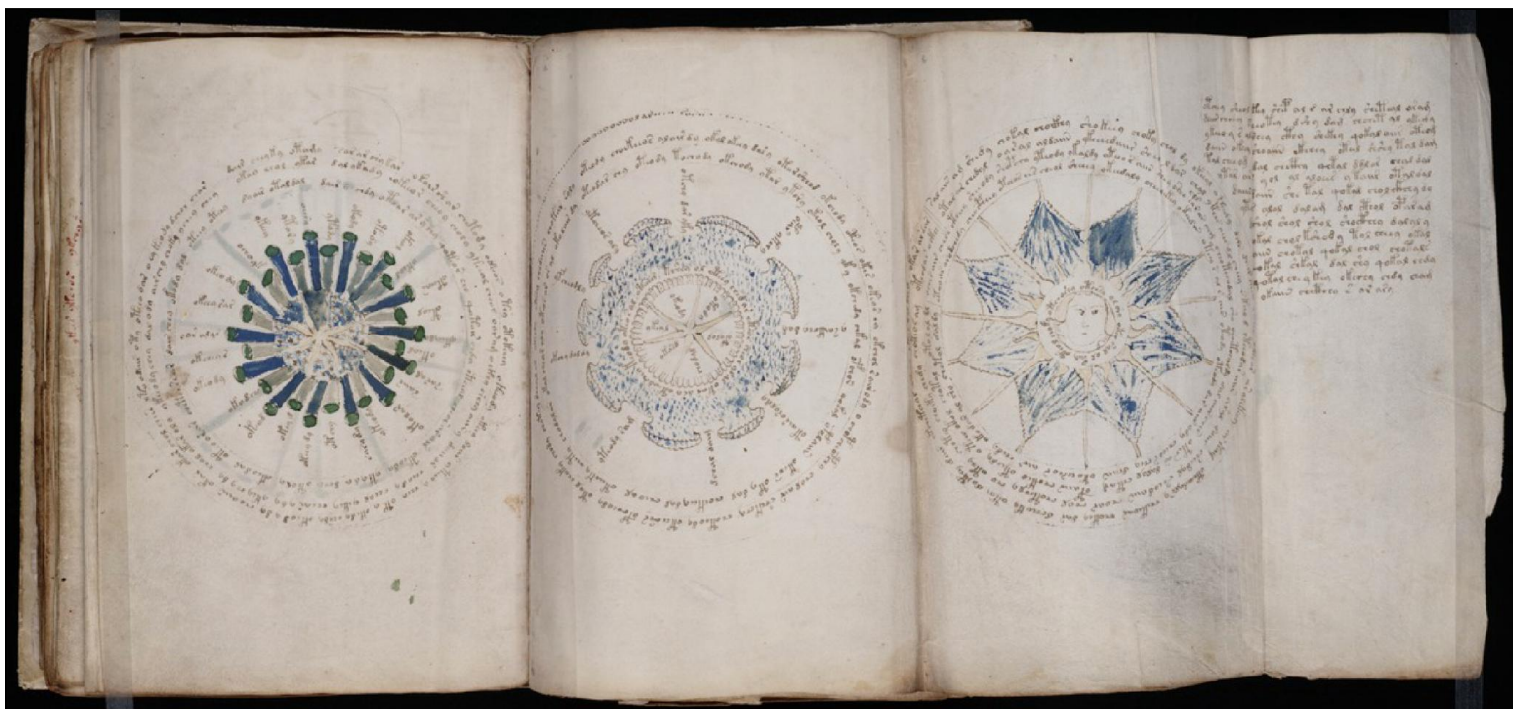
















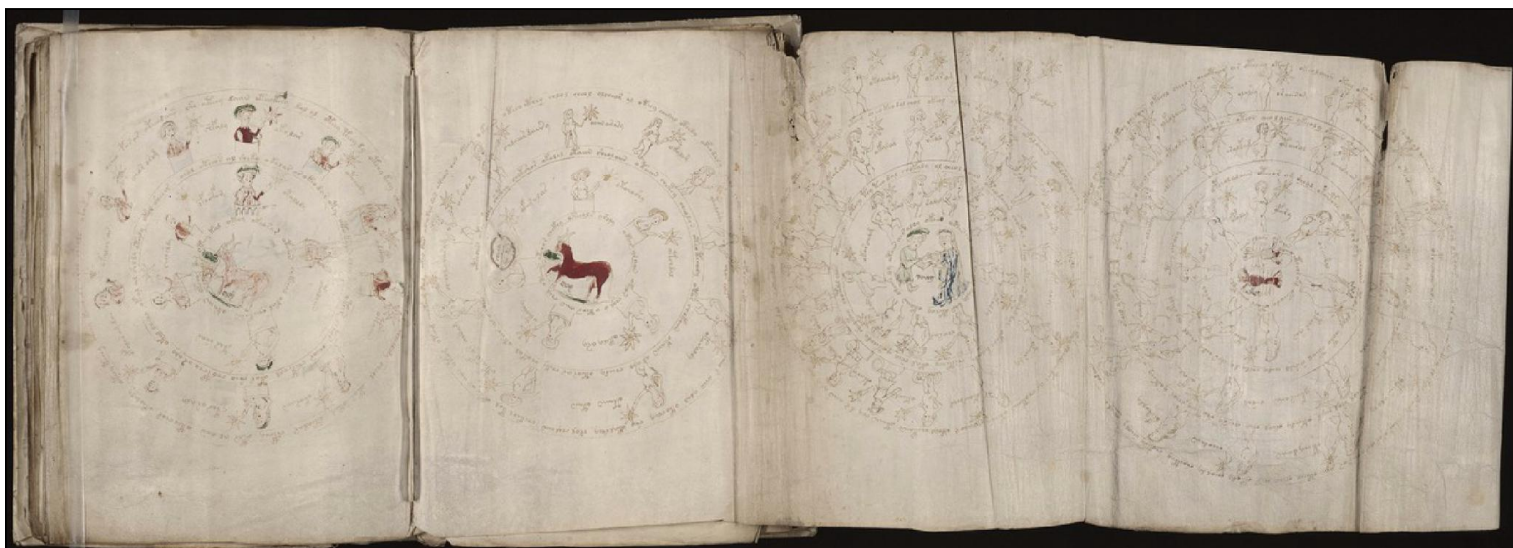




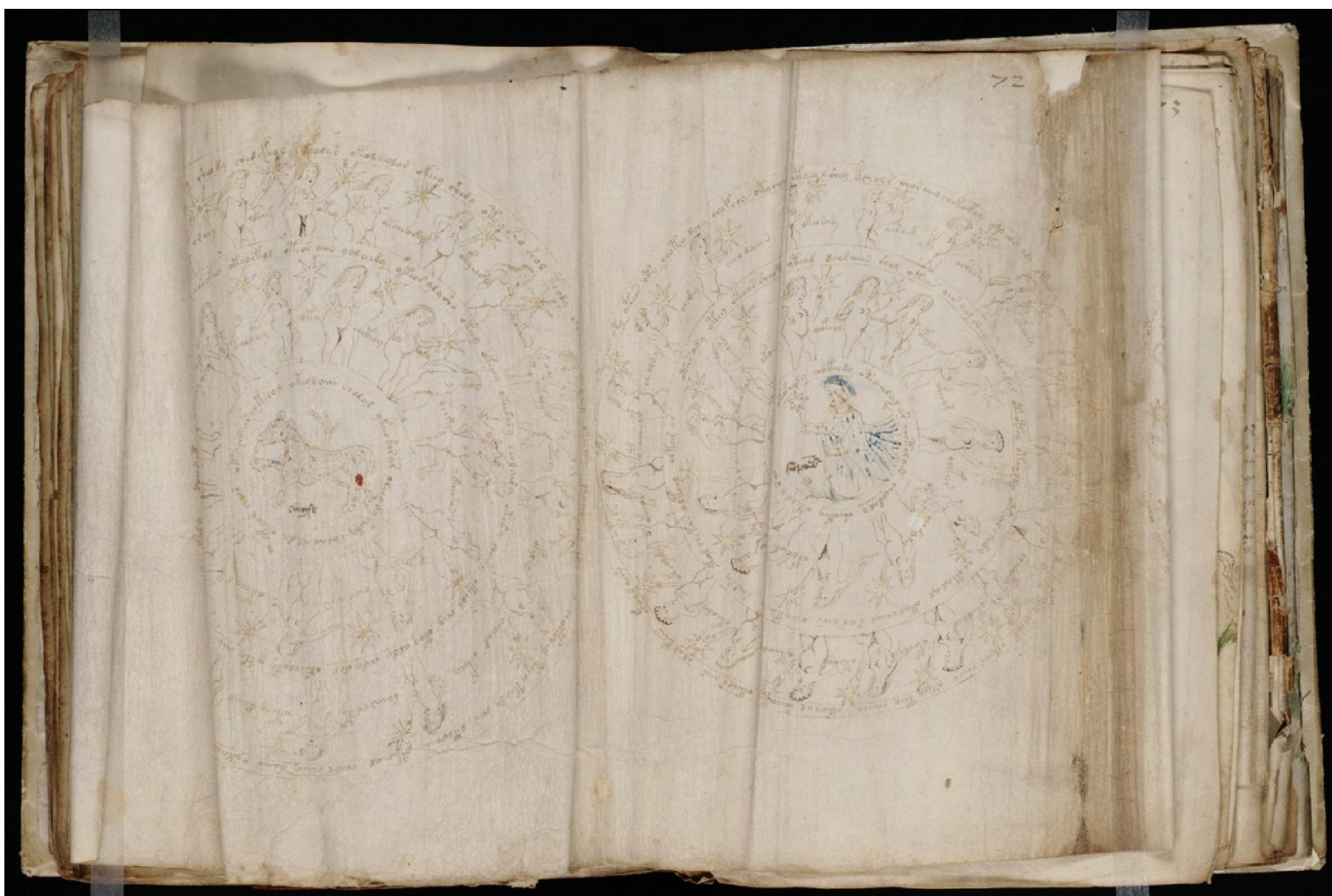


























18  
 19  
 20  
 21  
 22  
 23  
 24  
 25  
 26  
 27  
 28  
 29  
 30  
 31  
 32  
 33  
 34  
 35  
 36  
 37  
 38  
 39  
 40  
 41  
 42  
 43  
 44  
 45  
 46  
 47  
 48  
 49  
 50  
 51  
 52  
 53  
 54  
 55  
 56  
 57  
 58  
 59  
 60  
 61  
 62  
 63  
 64  
 65  
 66  
 67  
 68  
 69  
 70  
 71  
 72  
 73  
 74  
 75  
 76  
 77  
 78  
 79  
 80  
 81  
 82  
 83  
 84  
 85  
 86  
 87  
 88  
 89  
 90  
 91  
 92  
 93  
 94  
 95  
 96  
 97  
 98  
 99  
 100

dar offar offadg dg dor  
 x ctadg qolladg dorctadg  
 w oxctg qolladg ctadg qollaw  
 w ctadg offaroxctadg offaroxon  
 x qolladg dgadg  
 qolladg ctadg dg  
 xlladg darox  
 w oxlladg  
 law oxdg  
 xldg  
 lor  
 dg dg  
 lladg  
 dg  
 2  
 dar  
 oxdg  
 offar offar olaw ctadg dg  
 offadg qolladg lladg ollaw  
 oflor ctadg olor





Heudar theddo gollodg theddo qodg  
2or eedlg golland ollag 2or oredg  
2e eedlg llaw oredg 2olland 2or 2e  
gollodg gollag 2or oredg 2olland 2or 2e  
gollodg eedg llg ollag 2olland 2or 2e  
gollodg eedg 2or 2e 2or 2e 2olland  
2or 2e 2olland 2or 2e 2olland 2or 2e  
2or 2e 2olland 2or 2e 2olland 2or 2e  
2or 2e 2olland 2or 2e 2olland 2or 2e  
2or 2e 2olland 2or 2e 2olland 2or 2e  
2or 2e 2olland 2or 2e 2olland 2or 2e

2and eedlg eedlg gollag 2  
2and eedlg 2or eedlg 2or 2e  
2e eedlg gollodg theddo 2or 2e  
2e eedg eedg ollag gollodg ollag  
2e eedg 2or oredg ollag gollodg  
2or 2e 2or 2e gollodg 2or 2e  
2e eedg 2ollag ollag 2ollag 2ollag  
2or eedg gollg oredlg gollodg  
gollodg eedg golland llg 2e 2e  
2or eedg 2or 2e 2ollag 2ollag  
2and eedg 2e 2e



2or 2e 2ollag 2or 2e 2ollag 2or 2e 2ollag  
2or 2e 2ollag 2or 2e 2ollag 2or 2e 2ollag  
2or 2e 2ollag 2or 2e 2ollag 2or 2e 2ollag  
2or 2e 2ollag 2or 2e 2ollag 2or 2e 2ollag  
2or 2e 2ollag 2or 2e 2ollag 2or 2e 2ollag  
2or 2e 2ollag 2or 2e 2ollag 2or 2e 2ollag  
2or 2e 2ollag 2or 2e 2ollag 2or 2e 2ollag  
2or 2e 2ollag 2or 2e 2ollag 2or 2e 2ollag  
2or 2e 2ollag 2or 2e 2ollag 2or 2e 2ollag  
2or 2e 2ollag 2or 2e 2ollag 2or 2e 2ollag  
2or 2e 2ollag 2or 2e 2ollag 2or 2e 2ollag  
2or 2e 2ollag 2or 2e 2ollag 2or 2e 2ollag

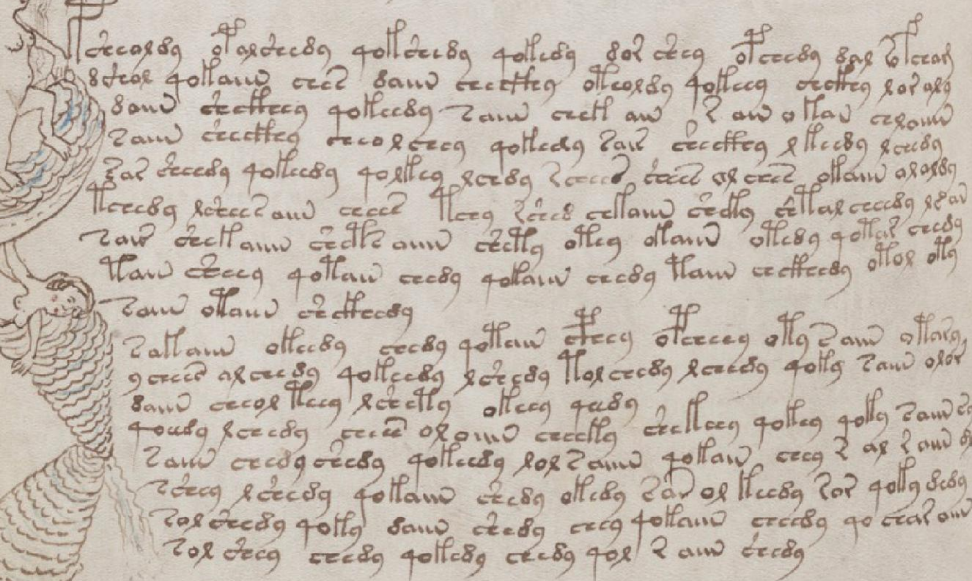
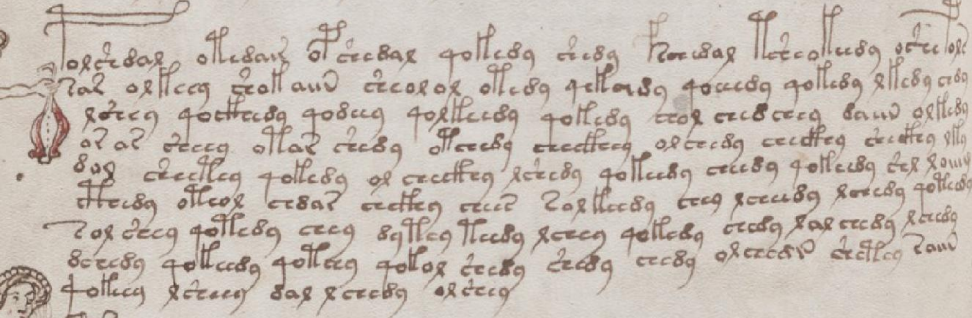
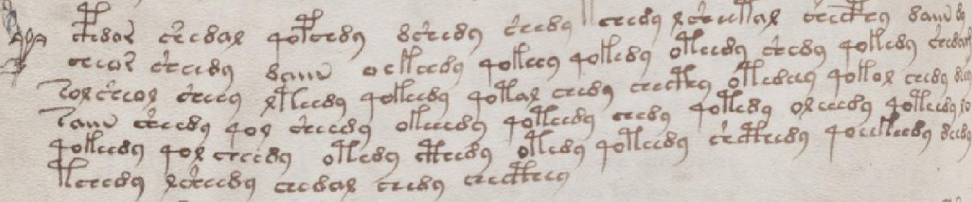
2or 2e 2ollag 2or 2e 2ollag 2or 2e 2ollag  
2or 2e 2ollag 2or 2e 2ollag 2or 2e 2ollag  
2or 2e 2ollag 2or 2e 2ollag 2or 2e 2ollag  
2or 2e 2ollag 2or 2e 2ollag 2or 2e 2ollag  
2or 2e 2ollag 2or 2e 2ollag 2or 2e 2ollag  
2or 2e 2ollag 2or 2e 2ollag 2or 2e 2ollag  
2or 2e 2ollag 2or 2e 2ollag 2or 2e 2ollag  
2or 2e 2ollag 2or 2e 2ollag 2or 2e 2ollag  
2or 2e 2ollag 2or 2e 2ollag 2or 2e 2ollag  
2or 2e 2ollag 2or 2e 2ollag 2or 2e 2ollag  
2or 2e 2ollag 2or 2e 2ollag 2or 2e 2ollag  
2or 2e 2ollag 2or 2e 2ollag 2or 2e 2ollag



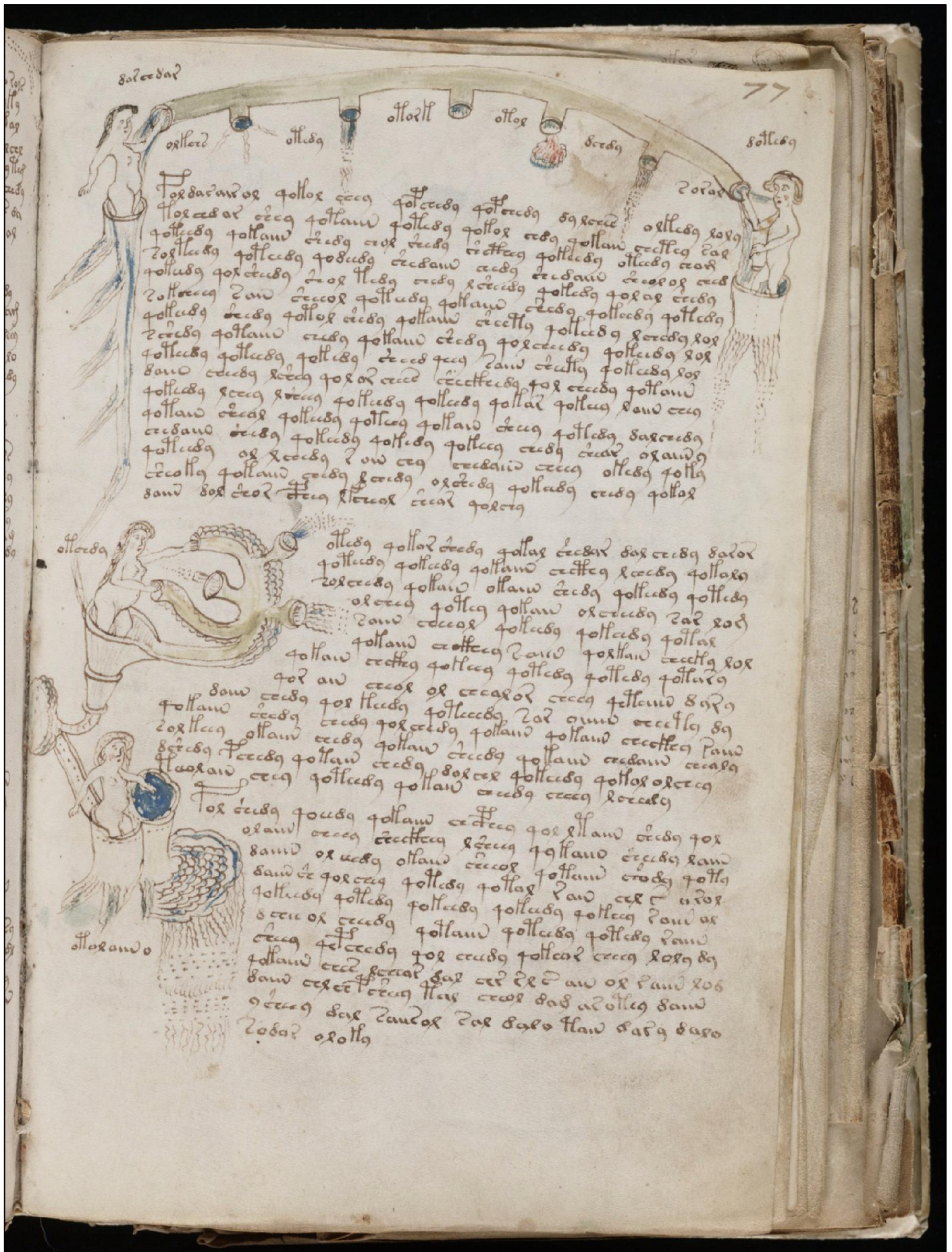


76r













40  
 41  
 42  
 43  
 44  
 45  
 46  
 47  
 48  
 49  
 50  
 51  
 52  
 53  
 54  
 55  
 56  
 57  
 58  
 59  
 60  
 61  
 62  
 63  
 64  
 65  
 66  
 67  
 68  
 69  
 70  
 71  
 72  
 73  
 74  
 75  
 76  
 77  
 78  
 79  
 80  
 81  
 82  
 83  
 84  
 85  
 86  
 87  
 88  
 89  
 90  
 91  
 92  
 93  
 94  
 95  
 96  
 97  
 98  
 99  
 100  
 101  
 102  
 103  
 104  
 105  
 106  
 107  
 108  
 109  
 110  
 111  
 112  
 113  
 114  
 115  
 116  
 117  
 118  
 119  
 120  
 121  
 122  
 123  
 124  
 125  
 126  
 127  
 128  
 129  
 130  
 131  
 132  
 133  
 134  
 135  
 136  
 137  
 138  
 139  
 140  
 141  
 142  
 143  
 144  
 145  
 146  
 147  
 148  
 149  
 150  
 151  
 152  
 153  
 154  
 155  
 156  
 157  
 158  
 159  
 160  
 161  
 162  
 163  
 164  
 165  
 166  
 167  
 168  
 169  
 170  
 171  
 172  
 173  
 174  
 175  
 176  
 177  
 178  
 179  
 180  
 181  
 182  
 183  
 184  
 185  
 186  
 187  
 188  
 189  
 190  
 191  
 192  
 193  
 194  
 195  
 196  
 197  
 198  
 199  
 200  
 201  
 202  
 203  
 204  
 205  
 206  
 207  
 208  
 209  
 210  
 211  
 212  
 213  
 214  
 215  
 216  
 217  
 218  
 219  
 220  
 221  
 222  
 223  
 224  
 225  
 226  
 227  
 228  
 229  
 230  
 231  
 232  
 233  
 234  
 235  
 236  
 237  
 238  
 239  
 240  
 241  
 242  
 243  
 244  
 245  
 246  
 247  
 248  
 249  
 250  
 251  
 252  
 253  
 254  
 255  
 256  
 257  
 258  
 259  
 260  
 261  
 262  
 263  
 264  
 265  
 266  
 267  
 268  
 269  
 270  
 271  
 272  
 273  
 274  
 275  
 276  
 277  
 278  
 279  
 280  
 281  
 282  
 283  
 284  
 285  
 286  
 287  
 288  
 289  
 290  
 291  
 292  
 293  
 294  
 295  
 296  
 297  
 298  
 299  
 300  
 301  
 302  
 303  
 304  
 305  
 306  
 307  
 308  
 309  
 310  
 311  
 312  
 313  
 314  
 315  
 316  
 317  
 318  
 319  
 320  
 321  
 322  
 323  
 324  
 325  
 326  
 327  
 328  
 329  
 330  
 331  
 332  
 333  
 334  
 335  
 336  
 337  
 338  
 339  
 340  
 341  
 342  
 343  
 344  
 345  
 346  
 347  
 348  
 349  
 350  
 351  
 352  
 353  
 354  
 355  
 356  
 357  
 358  
 359  
 360  
 361  
 362  
 363  
 364  
 365  
 366  
 367  
 368  
 369  
 370  
 371  
 372  
 373  
 374  
 375  
 376  
 377  
 378  
 379  
 380  
 381  
 382  
 383  
 384  
 385  
 386  
 387  
 388  
 389  
 390  
 391  
 392  
 393  
 394  
 395  
 396  
 397  
 398  
 399  
 400  
 401  
 402  
 403  
 404  
 405  
 406  
 407  
 408  
 409  
 410  
 411  
 412  
 413  
 414  
 415  
 416  
 417  
 418  
 419  
 420  
 421  
 422  
 423  
 424  
 425  
 426  
 427  
 428  
 429  
 430  
 431  
 432  
 433  
 434  
 435  
 436  
 437  
 438  
 439  
 440  
 441  
 442  
 443  
 444  
 445  
 446  
 447  
 448  
 449  
 450  
 451  
 452  
 453  
 454  
 455  
 456  
 457  
 458  
 459  
 460  
 461  
 462  
 463  
 464  
 465  
 466  
 467  
 468  
 469  
 470  
 471  
 472  
 473  
 474  
 475  
 476  
 477  
 478  
 479  
 480  
 481  
 482  
 483  
 484  
 485  
 486  
 487  
 488  
 489  
 490  
 491  
 492  
 493  
 494  
 495  
 496  
 497  
 498  
 499  
 500  
 501  
 502  
 503  
 504  
 505  
 506  
 507  
 508  
 509  
 510  
 511  
 512  
 513  
 514  
 515  
 516  
 517  
 518  
 519  
 520  
 521  
 522  
 523  
 524  
 525  
 526  
 527  
 528  
 529  
 530  
 531  
 532  
 533  
 534  
 535  
 536  
 537  
 538  
 539  
 540  
 541  
 542  
 543  
 544  
 545  
 546  
 547  
 548  
 549  
 550  
 551  
 552  
 553  
 554  
 555  
 556  
 557  
 558



11. 12. 13. 14. 15. 16. 17. 18. 19. 20. 21. 22. 23. 24. 25. 26. 27. 28. 29. 30. 31. 32. 33. 34. 35. 36. 37. 38. 39. 40. 41. 42. 43. 44. 45. 46. 47. 48. 49. 50. 51. 52. 53. 54. 55. 56. 57. 58. 59. 60. 61. 62. 63. 64. 65. 66. 67. 68. 69. 70. 71. 72. 73. 74. 75. 76. 77. 78. 79. 80. 81. 82. 83. 84. 85. 86. 87. 88. 89. 90. 91. 92. 93. 94. 95. 96. 97. 98. 99. 100. 101. 102. 103. 104. 105. 106. 107. 108. 109. 110. 111. 112. 113. 114. 115. 116. 117. 118. 119. 120. 121. 122. 123. 124. 125. 126. 127. 128. 129. 130. 131. 132. 133. 134. 135. 136. 137. 138. 139. 140. 141. 142. 143. 144. 145. 146. 147. 148. 149. 150. 151. 152. 153. 154. 155. 156. 157. 158. 159. 160. 161. 162. 163. 164. 165. 166. 167. 168. 169. 170. 171. 172. 173. 174. 175. 176. 177. 178. 179. 180. 181. 182. 183. 184. 185. 186. 187. 188. 189. 190. 191. 192. 193. 194. 195. 196. 197. 198. 199. 200. 201. 202. 203. 204. 205. 206. 207. 208. 209. 210. 211. 212. 213. 214. 215. 216. 217. 218. 219. 220. 221. 222. 223. 224. 225. 226. 227. 228. 229. 230. 231. 232. 233. 234. 235. 236. 237. 238. 239. 240. 241. 242. 243. 244. 245. 246. 247. 248. 249. 250. 251. 252. 253. 254. 255. 256. 257. 258. 259. 260. 261. 262. 263. 264. 265. 266. 267. 268. 269. 270. 271. 272. 273. 274. 275. 276. 277. 278. 279. 280. 281. 282. 283. 284. 285. 286. 287. 288. 289. 290. 291. 292. 293. 294. 295. 296. 297. 298. 299. 300. 301. 302. 303. 304. 305. 306. 307. 308. 309. 310. 311. 312. 313. 314. 315. 316. 317. 318. 319. 320. 321. 322. 323. 324. 325. 326. 327. 328. 329. 330. 331. 332. 333. 334. 335. 336. 337. 338. 339. 340. 341. 342. 343. 344. 345. 346. 347. 348. 349. 350. 351. 352. 353. 354. 355. 356. 357. 358. 359. 360. 361. 362. 363. 364. 365. 366. 367. 368. 369. 370. 371. 372. 373. 374. 375. 376. 377. 378. 379. 380. 381. 382. 383. 384. 385. 386. 387. 388. 389. 390. 391. 392. 393. 394. 395. 396. 397. 398. 399. 400. 401. 402. 403. 404. 405. 406. 407. 408. 409. 410. 411. 412. 413. 414. 415. 416. 417. 418. 419. 420. 421. 422. 423. 424. 425. 426. 427. 428. 429. 430. 431. 432. 433. 434. 435. 436. 437. 438. 439. 440. 441. 442. 443. 444. 445. 446. 447. 448. 449. 450. 451. 452. 453. 454. 455. 456. 457. 458. 459. 460. 461. 462. 463. 464. 465. 466. 467. 468. 469. 470. 471. 472. 473. 474. 475. 476. 477. 478. 479. 480. 481. 482. 483. 484. 485. 486. 487. 488. 489. 490. 491. 492. 493. 494. 495. 496. 497. 498. 499. 500. 501. 502. 503. 504. 505. 506. 507. 508. 509. 510. 511. 512. 513. 514. 515. 516. 517. 518. 519. 520. 521. 522. 523. 524. 525. 526. 527. 528. 529. 530. 531. 532. 533. 534. 535. 536. 537. 538. 539. 540. 541. 542. 543. 544. 545. 546. 547. 548. 549. 550. 551. 552. 553. 554. 555. 556. 557. 558. 559. 560. 561. 562. 563. 564. 565. 566. 567. 568. 569. 570. 571. 572. 573. 574. 575. 576. 577. 578. 579. 580. 581. 582. 583. 584. 585. 586. 587. 588. 589. 590. 591. 592. 593. 594. 595. 596. 597. 598. 599. 600. 601. 602. 603. 604. 605. 606. 607. 608. 609. 610. 611. 612. 613. 614. 615. 616. 617. 618. 619. 620. 621. 622. 623. 624. 625. 626. 627. 628. 629. 630. 631. 632. 633. 634. 635. 636. 637. 638. 639. 640. 641. 642. 643. 644. 645. 646. 647. 648. 649. 650. 651. 652. 653. 654. 655. 656. 657. 658. 659. 660. 661. 662. 663. 664. 665. 666. 667. 668. 669. 670. 671. 672. 673. 674. 675. 676. 677. 678. 679. 680. 681. 682. 683. 684. 685. 686. 687. 688. 689. 690. 691. 692. 693. 694. 695. 696. 697. 698. 699. 700. 701. 702. 703. 704. 705. 706. 707. 708. 709. 710. 711. 712. 713. 714. 715. 716. 717. 718. 719. 720. 721. 722. 723. 724. 725. 726. 727. 728. 729. 730. 731. 732. 733. 734. 735. 736. 737. 738. 739. 740. 741. 742. 743. 744. 745. 746. 747. 748. 749. 750. 751. 752. 753. 754. 755. 756. 757. 758. 759. 760. 761. 762. 763. 764. 765. 766. 767. 768. 769. 770. 771. 772. 773. 774. 775. 776. 777. 778. 779. 780. 781. 782. 783. 784. 785. 786. 787. 788. 789. 790. 791. 792. 793. 794. 795. 796. 797. 798. 799. 800. 801. 802. 803. 804. 805. 806. 807. 808. 809. 810. 811. 812. 813. 814. 815. 816. 817. 818. 819. 820. 821. 822. 823. 824. 825. 826. 827. 828. 829. 830. 831. 832. 833. 834. 835. 836. 837. 838. 839. 840. 841. 842. 843. 844. 845. 846.

[illegible]





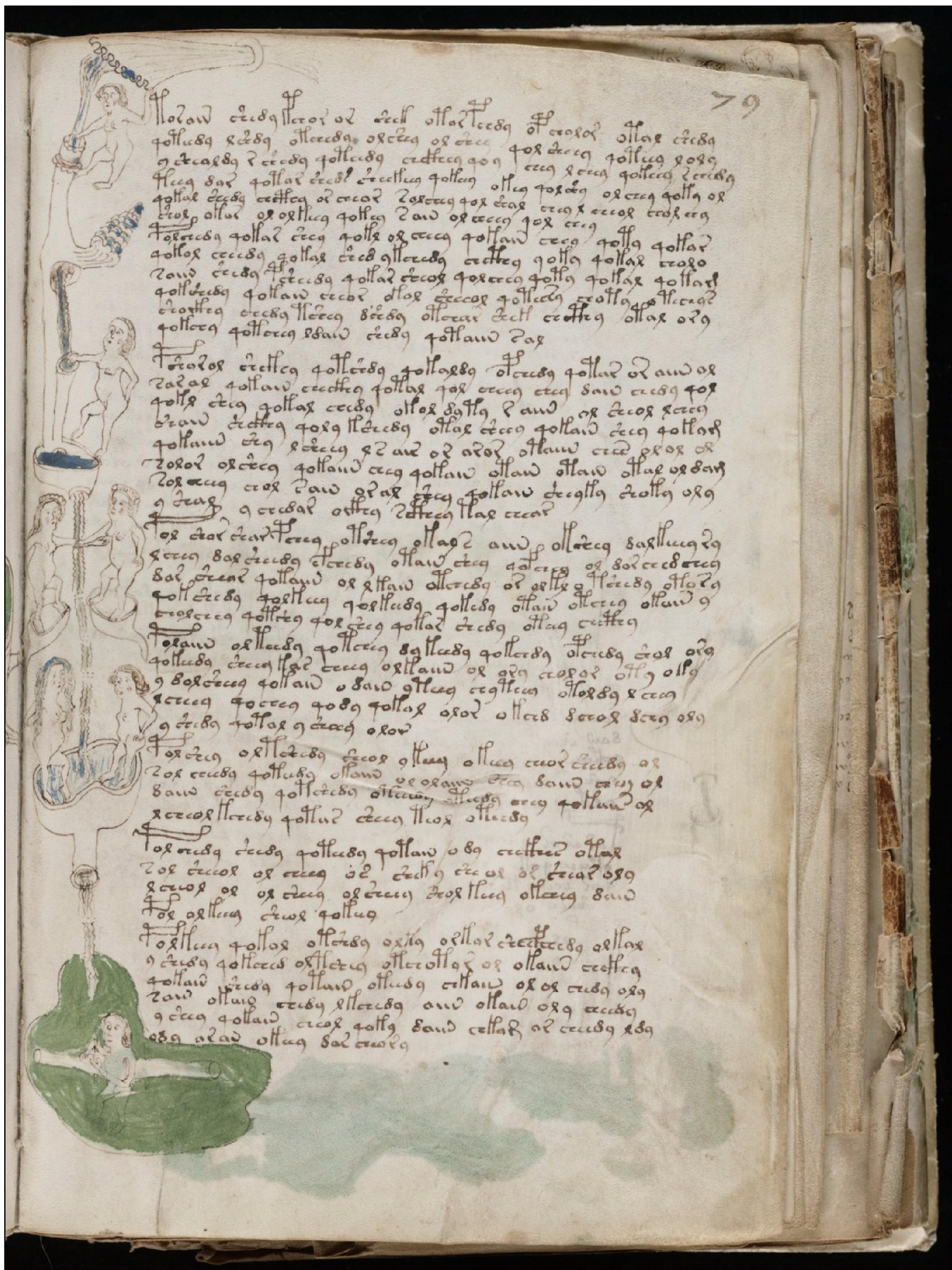


¶ *Handwritten text in a medieval script, likely Old English or Old Norse, arranged in a single column. The text is written in a cursive hand with some capital letters decorated in blue and red ink. The script is dense and fills the upper half of the page.*

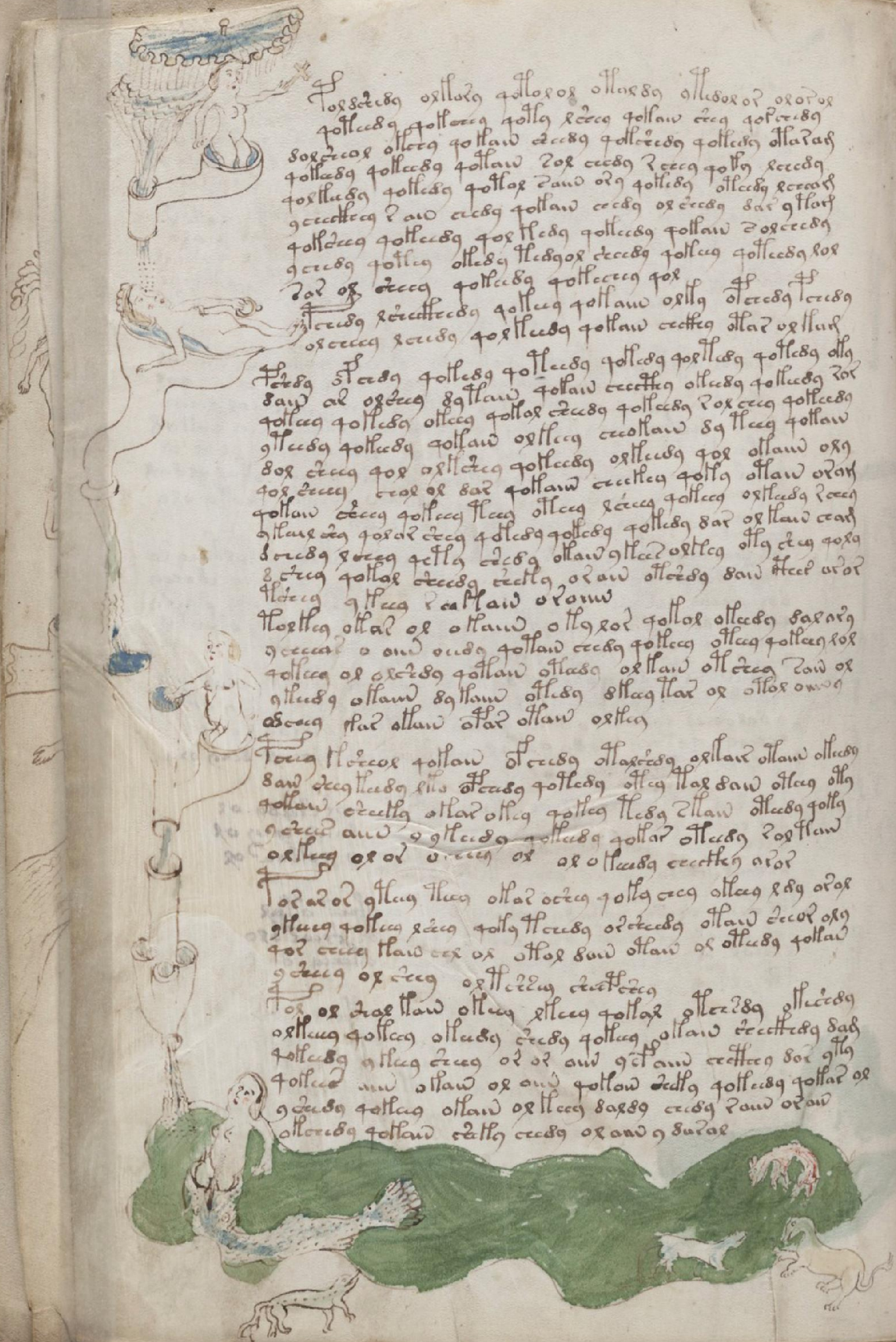


¶ *Handwritten text in a medieval script, continuing from the top section. It is written in a cursive hand with some capital letters decorated in blue and red ink. The text is dense and fills the lower half of the page.*

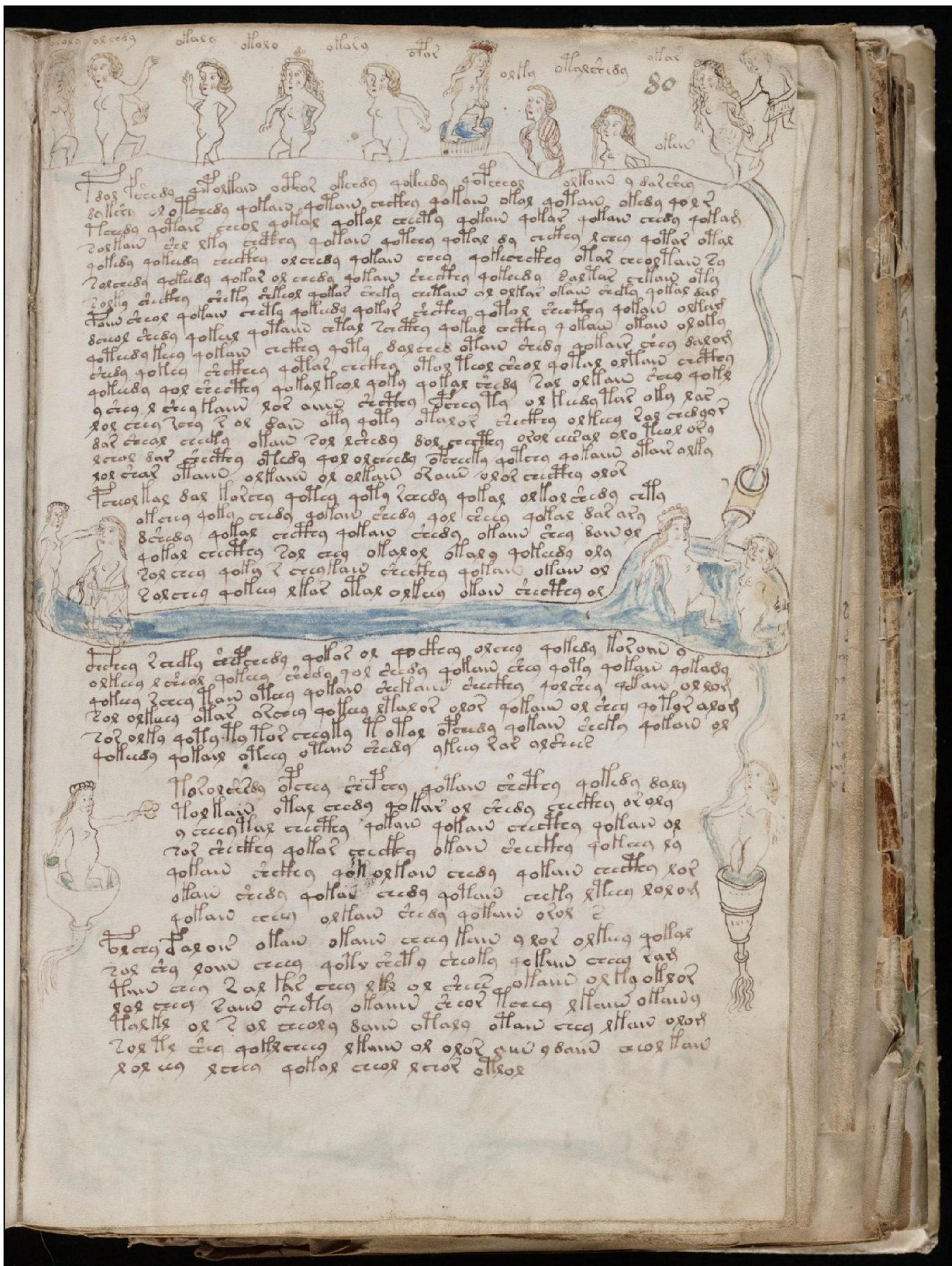




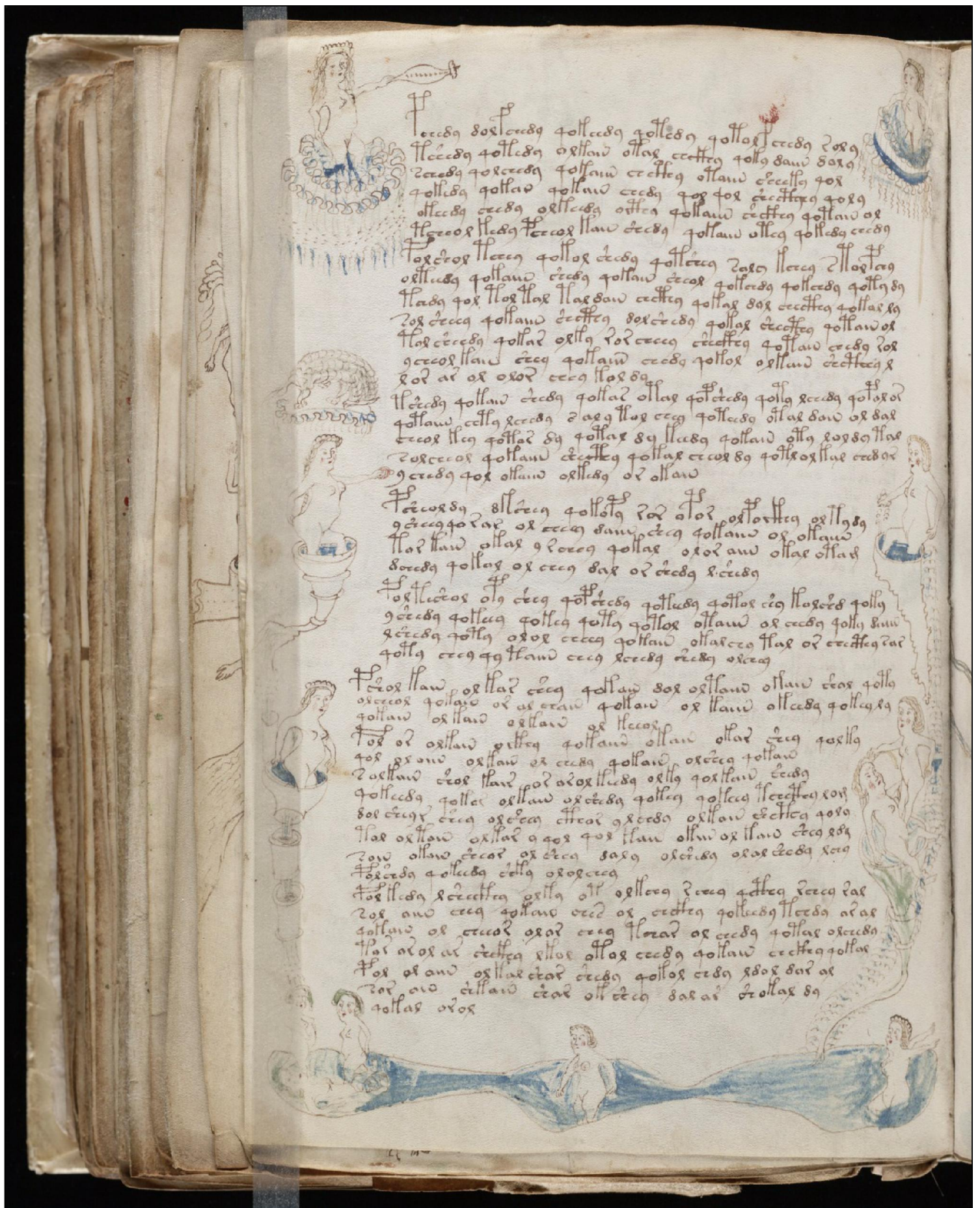




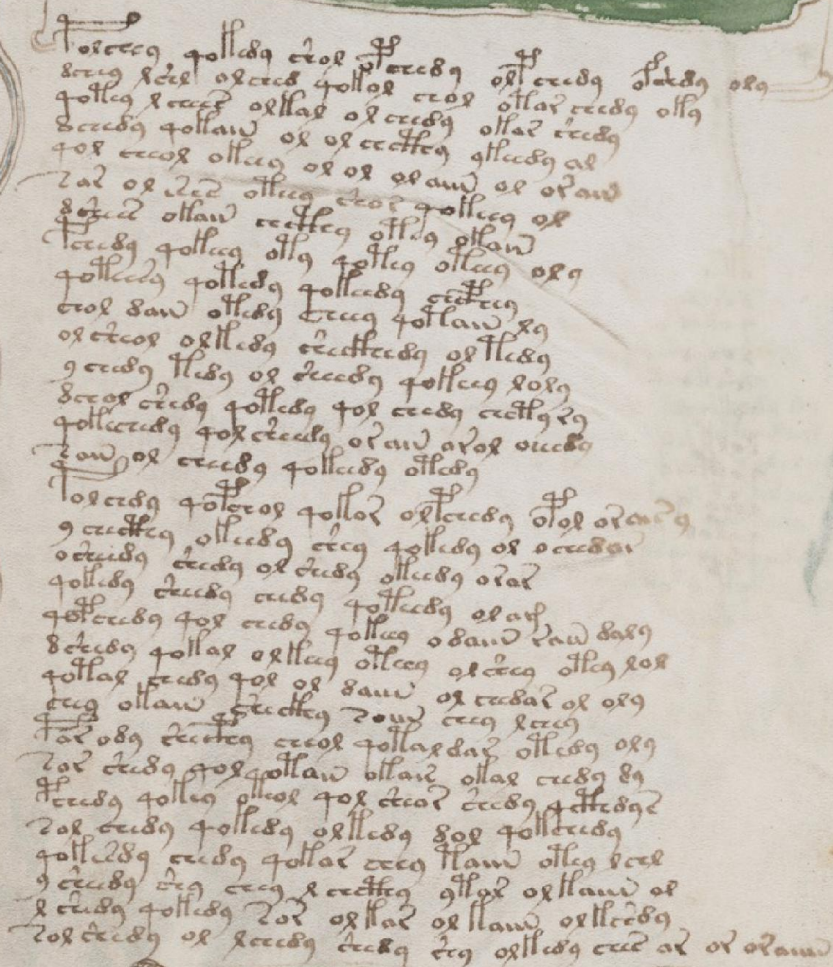
















Hand vella







[illegible]

offaro

offering

011802

1801

1870

1802

1807



208 210 212 214 216 218 220 222 224 226 228 230 232 234 236 238 240 242 244 246 248 250 252 254 256 258 260 262 264 266 268 270 272 274 276 278 280 282 284 286 288 290 292 294 296 298 300 302 304 306 308 310 312 314 316 318 320 322 324 326 328 330 332 334 336 338 340 342 344 346 348 350 352 354 356 358 360 362 364 366 368 370 372 374 376 378 380 382 384 386 388 390 392 394 396 398 400 402 404 406 408 410 412 414 416 418 420 422 424 426 428 430 432 434 436 438 440 442 444 446 448 450 452 454 456 458 460 462 464 466 468 470 472 474 476 478 480 482 484 486 488 490 492 494 496 498 500 502 504 506 508 510 512 514 516 518 520 522 524 526 528 530 532 534 536 538 540 542 544 546 548 550 552 554 556 558 560 562 564 566 568 570 572 574 576 578 580 582 584 586 588 590 592 594 596 598 600 602 604 606 608 610 612 614 616 618 620 622 624 626 628 630 632 634 636 638 640 642 644 646 648 650 652 654 656 658 660 662 664 666 668 670 672 674 676 678 680 682 684 686 688 690 692 694 696 698 700 702 704 706 708 710 712 714 716 718 720 722 724 726 728 730 732 734 736 738 740 742 744 746 748 750 752 754 756 758 760 762 764 766 768 770 772 774 776 778 780 782 784 786 788 790 792 794 796 798 800 802 804 806 808 810 812 814 816 818 820 822 824 826 828 830 832 834 836 838 840 842 844 846 848 850 852 854 856 858 860 862 864 866 868 870 872 874 876 878 880 882 884 886 888 890 892 894 896 898 900 902 904 906 908 910 912 914 916 918 920 922 924 926 928 930 932 934 936 938 940 942 944 946 948 950 952 954 956 958 960 962 964 966 968 970 972 974 976 978 980 982 984 986 988 990 992 994 996 998 1000





Forðsalh þaxor oðlaðg celland stæðg qollax cæðg cæðcæðg þæc  
 þæc cæðg qollaxg cæðg qollaxd cæðcæðg qollaxg qollax cæðg þæc  
 qollax cæðg þæc oðlaðg cæðg qollaxg qollaxd þæc cæðg oðlaðg  
 þæc cæðg oðlaðg þæc qollaxg qollaxg qollaxd cæðg þæc qollaxg  
 qollax cæðg qollax cæðg cæðg cæðg þæc oðlaðg cæðg qollaxg oðlaðg  
 cæðg qollaxg oðlaðg cæðg cæðg oðlaðg cæðg qollax cæðg qollax  
 qollax oðlaðg qollaxg cæðg þæc qollax oðlaðg qollaxg qollax  
 oðlaðg qollaxd oðlaðg cæðg oðlaðg

[illegible][illegible]



[illegible]

1000 1100 1200 1300 1400 1500 1600 1700 1800 1900 2000 2100 2200 2300 2400 2500 2600 2700 2800 2900 3000 3100 3200 3300 3400 3500 3600 3700 3800 3900 4000 4100 4200 4300 4400 4500 4600 4700 4800 4900 5000 5100 5200 5300 5400 5500 5600 5700 5800 5900 6000 6100 6200 6300 6400 6500 6600 6700 6800 6900 7000 7100 7200 7300 7400 7500 7600 7700 7800 7900 8000 8100 8200 8300 8400 8500 8600 8700 8800 8900 9000 9100 9200 9300 9400 9500 9600 9700 9800 9900 10000 10100 10200 10300 10400 10500 10600 10700 10800 10900 11000 11100 11200 11300 11400 11500 11600 11700 11800 11900 12000 12100 12200 12300 12400 12500 12600 12700 12800 12900 13000 13100 13200 13300 13400 13500 13600 13700 13800 13900 14000 14100 14200 14300 14400 14500 14600 14700 14800 14900 15000 15100 15200 15300 15400 15500 15600 15700 15800 15900 16000 16100 16200 16300 16400 16500 16600 16700 16800 16900 17000 17100 17200 17300 17400 17500 17600 17700 17800 17900 18000 18100 18200 18300 18400 18500 18600 18700 18800 18900 19000 19100 19200 19300 19400 19500 19600 19700 19800 19900 20000 20100 20200 20300 20400 20500 20600 20700 20800 20900 21000 21100 21200 21300 21400 21500 21600 21700 21800 21900 22000 22100 22200 22300 22400 22500 22600 22700 22800 22900 23000 23100 23200 23300 23400 23500 23600 23700 23800 23900 24000 24100 24200 24300 24400 24500 24600 24700 24800 24900 25000 25100 25200 25300 25400 25500 25600 25700 25800 25900 26000 26100 26200 26300 26400 26500 26600 26700 26800 26900 27000 27100 27200 27300 27400 27500 27600 27700 27800 27900 28000 28100 28200 28300 28400 28500 28600 28700 28800 28900 29000 29100 29200 29300 29400 29500 29600 29700 29800 29900 30000 30100 30200 30300 30400 30500 30600 30700 30800 30900 31000 31100 31200 31300 31400 31500 31600 31700 31800 31900 32000 32100 32200 32300 32400 32500 32600 32700 32800 32900 33000 33100 33200 33300 33400 33500 33600 33700 33800 33900 34000 34100 34200 34300 34400 34500 34600 34700 34800 34900 35000 35100 35200 35300 35400 35500 35600 35700 35800 35900 36000 36100 36200 36300 36400 36500 36600 36700 36800 36900 37000 37100 37200 37300 37400 37500 37600 37700 37800 37900 38000 38100 38200 38300 38400 38500 38600 38700 38800 38900 39000 39100 39200 39300 39400 39500 39600 39700 39800 39900 40000 40100 40200 40300 40400 40500 40600 40700 40800 40900 41000 41100 41200 41300 41400 41500 41600 41700 41800 41900 42000 42100 42200 42300 42400 42500 42600 42700 42800 42900 43000 43100 43200 43300 43400 43500 43600 43700 43800 43900 44000 44100 44200 44300 44400 44500 44600 44700 44800 44900 45000 45100 45200 45300 45400 45500 45600 45700 45800 45900 46000 46100 46200 46300 46400 46500 46600 46700 46800 46900 47000 47100 47200 47300 47400 47500 47600 47700 47800 47900 48000 48100 48200 48300 48400 48500 48600 48700 48800 48900 49000 49100 49200 49300 49400 49500 49600 49700 49800 49900 50000 50100 50200 50300 50400 50500 50600 50700 50800 50900 51000 51100 51200 51300 51400 51500 51600 51700 51800 51900 52000 52100 52200 52300 52400 52500 52600 52700 52800 52900 53000 53100 53200 53300 53400 53500 53600 53700 53800 53900 54000 54100 54200 54300 54400 54500 54600 54700 54800 54900 55000 55100 55200 55300 55400 55500 55600 55700 55800 55900 56000 56100 56200 56300 56400 56500 56600 56700 56800 56900 57000 57100 57200 57300 57400 57500 57600 57700 57800 57900 58000 58100 58200 58300 58400 58500 58600 58700 58800 58900 59000 59100 59200 59300 59400 59500 59600 59700 59800 59900 60000 60100 60200 60300 60400 60500 60600 60700 60800 60900 61000 61100 61200 61300 61400 61500 61600 61700 61800 61900 62000 62100 62200 62300 62400 62500 62600 62700 62800 62900 63000 63100 63200 63300 63400 63500 63600 63700 63800 63900 64000 64100 64200 64300 64400 64500 64600 64700 64800 64900 65000 65100 65200 65300 65400 65500 65600 65700 65800 65900 66000 66100 66200 66300 66400 66500 66600 66700 66800 66900 67000 67100 67200 67300 67400 67500 67600 67700 67800 67900 68000 68100 68200 68300 68400 68500 68600 68700 68800 68900 69000 69100 69200 69300 69400 69500 69600 69700 69800 69900 70000 70100 70200 70300 70400 70500 70600

[illegible]



Illegible text at the top right of the page.

Illegible text in the main body of the page, written in a medieval script.



Illegible text to the right of the upper miniature.

Illegible text to the right of the lower miniature.



85r







[illegible][illegible]

1<sup>st</sup> <sup>1</sup> <sup>2</sup> <sup>3</sup> <sup>4</sup> <sup>5</sup> <sup>6</sup> <sup>7</sup> <sup>8</sup> <sup>9</sup> <sup>10</sup> <sup>11</sup> <sup>12</sup> <sup>13</sup> <sup>14</sup> <sup>15</sup> <sup>16</sup> <sup>17</sup> <sup>18</sup> <sup>19</sup> <sup>20</sup> <sup>21</sup> <sup>22</sup> <sup>23</sup> <sup>24</sup> <sup>25</sup> <sup>26</sup> <sup>27</sup> <sup>28</sup> <sup>29</sup> <sup>30</sup> <sup>31</sup> <sup>32</sup> <sup>33</sup> <sup>34</sup> <sup>35</sup> <sup>36</sup> <sup>37</sup> <sup>38</sup> <sup>39</sup> <sup>40</sup> <sup>41</sup> <sup>42</sup> <sup>43</sup> <sup>44</sup> <sup>45</sup> <sup>46</sup> <sup>47</sup> <sup>48</sup> <sup>49</sup> <sup>50</sup> <sup>51</sup> <sup>52</sup> <sup>53</sup> <sup>54</sup> <sup>55</sup> <sup>56</sup> <sup>57</sup> <sup>58</sup> <sup>59</sup> <sup>60</sup> <sup>61</sup> <sup>62</sup> <sup>63</sup> <sup>64</sup> <sup>65</sup> <sup>66</sup> <sup>67</sup> <sup>68</sup> <sup>69</sup> <sup>70</sup> <sup>71</sup> <sup>72</sup> <sup>73</sup> <sup>74</sup> <sup>75</sup> <sup>76</sup> <sup>77</sup> <sup>78</sup> <sup>79</sup> <sup>80</sup> <sup>81</sup> <sup>82</sup> <sup>83</sup> <sup>84</sup> <sup>85</sup> <sup>86</sup> <sup>87</sup> <sup>88</sup> <sup>89</sup> <sup>90</sup> <sup>91</sup> <sup>92</sup> <sup>93</sup> <sup>94</sup> <sup>95</sup> <sup>96</sup> <sup>97</sup> <sup>98</sup> <sup>99</sup> <sup>100</sup> <sup>101</sup> <sup>102</sup> <sup>103</sup> <sup>104</sup> <sup>105</sup> <sup>106</sup> <sup>107</sup> <sup>108</sup> <sup>109</sup> <sup>110</sup> <sup>111</sup> <sup>112</sup> <sup>113</sup> <sup>114</sup> <sup>115</sup> <sup>116</sup> <sup>117</sup> <sup>118</sup> <sup>119</sup> <sup>120</sup> <sup>121</sup> <sup>122</sup> <sup>123</sup> <sup>124</sup> <sup>125</sup> <sup>126</sup> <sup>127</sup> <sup>128</sup> <sup>129</sup> <sup>130</sup> <sup>131</sup> <sup>132</sup> <sup>133</sup> <sup>134</sup> <sup>135</sup> <sup>136</sup> <sup>137</sup> <sup>138</sup> <sup>139</sup> <sup>140</sup> <sup>141</sup> <sup>142</sup> <sup>143</sup> <sup>144</sup> <sup>145</sup> <sup>146</sup> <sup>147</sup> <sup>148</sup> <sup>149</sup> <sup>150</sup> <sup>151</sup> <sup>152</sup> <sup>153</sup> <sup>154</sup> <sup>155</sup> <sup>156</sup> <sup>157</sup> <sup>158</sup> <sup>159</sup> <sup>160</sup> <sup>161</sup> <sup>162</sup> <sup>163</sup> <sup>164</sup> <sup>165</sup> <sup>166</sup> <sup>167</sup> <sup>168</sup> <sup>169</sup> <sup>170</sup> <sup>171</sup> <sup>172</sup> <sup>173</sup> <sup>174</sup> <sup>175</sup> <sup>176</sup> <sup>177</sup> <sup>178</sup> <sup>179</sup> <sup>180</sup> <sup>181</sup> <sup>182</sup> <sup>183</sup> <sup>184</sup> <sup>185</sup> <sup>186</sup> <sup>187</sup> <sup>188</sup> <sup>189</sup> <sup>190</sup> <sup>191</sup> <sup>192</sup> <sup>193</sup> <sup>194</sup> <sup>195</sup> <sup>196</sup> <sup>197</sup> <sup>198</sup> <sup>199</sup> <sup>200</sup> <sup>201</sup> <sup>202</sup> <sup>203</sup> <sup>204</sup> <sup>205</sup> <sup>206</sup> <sup>207</sup> <sup>208</sup> <sup>209</sup> <sup>210</sup> <sup>211</sup> <sup>212</sup> <sup>213</sup> <sup>214</sup> <sup>215</sup> <sup>216</sup> <sup>217</sup> <sup>218</sup> <sup>219</sup> <sup>220</sup> <sup>221</sup> <sup>222</sup> <sup>223</sup> <sup>224</sup> <sup>225</sup> <sup>226</sup> <sup>227</sup> <sup>228</sup> <sup>229</sup> <sup>230</sup> <sup>231</sup> <sup>232</sup> <sup>233</sup> <sup>234</sup> <sup>235</sup> <sup>236</sup> <sup>237</sup> <sup>238</sup> <sup>239</sup> <sup>240</sup> <sup>241</sup> <sup>242</sup> <sup>243</sup> <sup>244</sup> <sup>245</sup> <sup>246</sup> <sup>247</sup> <sup>248</sup> <sup>249</sup> <sup>250</sup> <sup>251</sup> <sup>252</sup> <sup>253</sup> <sup>254</sup> <sup>255</sup> <sup>256</sup> <sup>257</sup> <sup>258</sup> <sup>259</sup> <sup>260</sup> <sup>261</sup> <sup>262</sup> <sup>263</sup> <sup>264</sup> <sup>265</sup> <sup>266</sup> <sup>267</sup> <sup>268</sup> <sup>269</sup> <sup>270</sup> <sup>271</sup> <sup>272</sup> <sup>273</sup> <sup>274</sup> <sup>275</sup> <sup>276</sup> <sup>277</sup> <sup>278</sup> <sup>279</sup> <sup>280</sup> <sup>281</sup> <sup>282</sup> <sup>283</sup> <sup>284</sup> <sup>285</sup> <sup>286</sup> <sup>287</sup> <sup>288</sup> <sup>289</sup> <sup>290</sup> <sup>291</sup> <sup>292</sup> <sup>293</sup> <sup>294</sup> <sup>295</sup> <sup>296</sup> <sup>297</sup> <sup>298</sup> <sup>299</sup> <sup>300</sup> <sup>301</sup> <sup>302</sup> <sup>303</sup> <sup>304</sup> <sup>305</sup> <sup>306</sup> <sup>307</sup> <sup>308</sup> <sup>309</sup> <sup>310</sup> <sup>311</sup> <sup>312</sup> <sup>313</sup> <sup>314</sup> <sup>315</sup> <sup>316</sup> <sup>317</sup> <sup>318</sup> <sup>319</sup> <sup>320</sup> <sup>321</sup> <sup>322</sup> <sup>323</sup> <sup>324</sup> <sup>325</sup> <sup>326</sup> <sup>327</sup> <sup>328</sup> <sup>329</sup> <sup>330</sup> <sup>331</sup> <sup>332</sup> <sup>333</sup> <sup>334</sup> <sup>335</sup> <sup>336</sup> <sup>337</sup> <sup>338</sup> <sup>339</sup> <sup>340</sup> <sup>341</sup> <sup>342</sup> <sup>343</sup> <sup>344</sup> <sup>345</sup> <sup>346</sup> <sup>347</sup> <sup>348</sup> <sup>349</sup> <sup>350</sup> <sup>351</sup> <sup>352</sup> <sup>353</sup> <sup>354</sup> <sup>355</sup> <sup>356</sup> <sup>357</sup> <sup>358</sup> <sup>359</sup> <sup>360</sup> <sup>361</sup> <sup>362</sup> <sup>363</sup> <sup>364</sup> <sup>365</sup> <sup>366</sup> <sup>367</sup> <sup>368</sup> <sup>369</sup> <sup>370</sup> <sup>371</sup> <sup>372</sup> <sup>373</sup> <sup>374</sup> <sup>375</sup> <sup>376</sup> <sup>377</sup> <sup>378</sup> <sup>379</sup> <sup>380</sup> <sup>381</sup> <sup>382</sup> <sup>383</sup> <sup>384</sup> <sup>385</sup> <sup>386</sup> <sup>387</sup> <sup>388</sup> <sup>389</sup> <sup>390</sup> <sup>391</sup> <sup>392</sup> <sup>393</sup> <sup>394</sup> <sup>395</sup> <sup>396</sup> <sup>397</sup> <sup>398</sup> <sup>399</sup> <sup>400</sup> <sup>401</sup> <sup>402</sup> <sup>403</sup> <sup>404</sup> <sup>405</sup> <sup>406</sup> <sup>407</sup> <sup>408</sup> <sup>409</sup> <sup>410</sup> <sup>411</sup> <sup>412</sup> <sup>413</sup> <sup>414</sup> <sup>415</sup> <sup>416</sup> <sup>417</sup> <sup>418</sup> <sup>419</sup> <sup>420</sup> <sup>421</sup> <sup>422</sup> <sup>423</sup> <sup>424</sup> <sup>425</sup> <sup>426</sup> <sup>427</sup> <sup>428</sup> <sup>429</sup> <sup>430</sup> <sup>431</sup> <sup>432</sup> <sup>433</sup> <sup>434</sup> <sup>435</sup> <sup>436</sup> <sup>437</sup> <sup>438</sup> <sup>439</sup> <sup>440</sup> <sup>441</sup> <sup>442</sup> <sup>443</sup> <sup>444</sup> <sup>445</sup> <sup>446</sup> <sup>447</sup> <sup>448</sup> <sup>449</sup> <sup>450</sup> <sup>451</sup> <sup>452</sup> <sup>453</sup> <sup>454</sup> <sup>455</sup> <sup>456</sup> <sup>457</sup> <sup>458</sup> <sup>459</sup> <sup>460</sup> <sup>461</sup> <sup>462</sup> <sup>463</sup> <sup>464</sup> <sup>465</sup> <sup>466</sup>

1871  
 1872  
 1873  
 1874  
 1875  
 1876  
 1877  
 1878  
 1879  
 1880  
 1881  
 1882  
 1883  
 1884  
 1885  
 1886  
 1887  
 1888  
 1889  
 1890  
 1891  
 1892  
 1893  
 1894  
 1895  
 1896  
 1897  
 1898  
 1899  
 1900  
 1901  
 1902  
 1903  
 1904  
 1905  
 1906  
 1907  
 1908  
 1909  
 1910  
 1911  
 1912  
 1913  
 1914  
 1915  
 1916  
 1917  
 1918  
 1919  
 1920  
 1921  
 1922  
 1923  
 1924  
 1925  
 1926  
 1927  
 1928  
 1929  
 1930  
 1931  
 1932  
 1933  
 1934  
 1935  
 1936  
 1937  
 1938  
 1939  
 1940  
 1941  
 1942  
 1943  
 1944  
 1945  
 1946  
 1947  
 1948  
 1949  
 1950  
 1951  
 1952  
 1953  
 1954  
 1955  
 1956  
 1957  
 1958  
 1959  
 1960  
 1961  
 1962  
 1963  
 1964  
 1965  
 1966  
 1967  
 1968  
 1969  
 1970  
 1971  
 1972  
 1973  
 1974  
 1975  
 1976  
 1977  
 1978  
 1979  
 1980  
 1981  
 1982  
 1983  
 1984  
 1985  
 1986  
 1987  
 1988  
 1989  
 1990  
 1991  
 1992  
 1993  
 1994  
 1995  
 1996  
 1997  
 1998  
 1999  
 2000  
 2001  
 2002  
 2003  
 2004  
 2005  
 2006  
 2007  
 2008  
 2009  
 2010  
 2011  
 2012  
 2013  
 2014  
 2015  
 2016  
 2017  
 2018  
 2019  
 2020  
 2021  
 2022  
 2023  
 2024  
 2025  
 2026  
 2027  
 2028  
 2029  
 2030  
 2031  
 2032  
 2033  
 2034  
 2035  
 2036  
 2037  
 2038  
 2039  
 2040  
 2041  
 2042  
 2043  
 2044  
 2045  
 2046  
 2047  
 2048  
 2049  
 2050  
 2051  
 2052  
 2053  
 2054  
 2055  
 2056  
 2057  
 2058  
 2059  
 2060  
 2061  
 2062  
 2063  
 2064  
 2065  
 2066  
 2067  
 2068  
 2069  
 2070  
 2071  
 2072  
 2073  
 2074  
 2075  
 2076  
 2077  
 2078  
 2079  
 2080  
 2081  
 2082  
 2083  
 2084  
 2085  
 2086  
 2087  
 2088  
 2089  
 2090  
 2091  
 2092  
 2093  
 2094  
 2095  
 2096  
 2097  
 2098  
 2099  
 2100  
 2101  
 2102  
 2103  
 2104  
 2105  
 2106  
 2107  
 2108  
 2109  
 2110  
 2111  
 2112  
 2113  
 2114  
 2115  
 2116  
 2117  
 2118  
 2119  
 2120  
 2121  
 2122  
 2123  
 2124  
 2125  
 2126  
 2127  
 2128  
 2129  
 2130  
 2131  
 2132  
 2133  
 2134  
 2135  
 2136  
 2137  
 2138  
 2139  
 2140  
 2141  
 2142  
 2143  
 2144  
 2145  
 2146  
 2147  
 2148  
 2149  
 2150  
 2151  
 2152  
 2153  
 2154  
 2155  
 2156  
 2157  
 2158  
 2159  
 2160  
 2161  
 2162  
 2163  
 2164  
 2165  
 2166  
 2167  
 2168  
 2169  
 2170  
 2171  
 2172  
 2173  
 2174  
 2175  
 2176  
 2177  
 2178  
 2179  
 2180  
 2181  
 2182  
 2183  
 2184  
 2185  
 2186  
 2187  
 2188  
 2189  
 2190  
 2191  
 2192  
 2193  
 2194  
 2195  
 2196  
 2197  
 2198  
 2199  
 2200  
 2201  
 2202  
 2203  
 2204  
 2205  
 2206  
 2207  
 2208  
 2209  
 2210  
 2211  
 2212  
 2213  
 2214  
 2215  
 2216  
 2217  
 2218  
 2219  
 2220  
 2221  
 2222  
 2223  
 2224  
 2225  
 2226  
 2227  
 2228  
 2229  
 2230  
 2231  
 2232  
 2233  
 2234  
 2235  
 2236  
 2237  
 2238  
 2239  
 2240  
 2241  
 2242  
 2243  
 2244  
 2245  
 2246  
 2247  
 2248  
 2249  
 2250  
 2251  
 2252  
 2253  
 2254  
 2255  
 2256  
 2257  
 2258  
 2259  
 2260  
 2261  
 2262  
 2263  
 2264  
 2265  
 2266  
 2267  
 2268  
 2269  
 2270  
 2271  
 2272  
 2273  
 2274  
 2275  
 2276  
 2277  
 2278  
 2279  
 2280  
 2281  
 2282  
 2283  
 2284  
 2285  
 2286  
 2287  
 2288  
 2289  
 2290  
 2291  
 2292  
 2293  
 2294  
 2295  
 2296  
 2297  
 2298  
 2299  
 2300  
 2301  
 2302  
 2303  
 2304  
 2305  
 2306  
 2307  
 2308  
 2309  
 2310  
 2311  
 2312  
 2313  
 2314  
 2315  
 2316  
 2317  
 2318  
 2319  
 2320  
 2321  
 2322  
 2323  
 2324  
 2325

A detail from a manuscript page, likely from the Lindisfarne Gospels, showing a large, ornate initial 'A' in blue and red, followed by text in a Gothic script. The text is written in a dark ink on parchment, with some red ink used for initials or rubrics. The script is dense and fills the page.







¶ Loatceat ceatceat ¶ Loatceat ceatceat  
 dceatceat ceatceat ceatceat ceatceat  
 ceatceat ceatceat ceatceat ceatceat  
 ceatceat ceatceat ceatceat ceatceat  
 ceatceat ceatceat ceatceat ceatceat  
 ceatceat ceatceat ceatceat ceatceat  
 ceatceat ceatceat ceatceat ceatceat  
 ceatceat ceatceat ceatceat ceatceat  
 ceatceat ceatceat ceatceat ceatceat  
 ceatceat ceatceat ceatceat ceatceat  
 ceatceat ceatceat ceatceat ceatceat  
 ceatceat ceatceat ceatceat ceatceat

¶ Ceatceat ceatceat ceatceat ceatceat  
 ceatceat ceatceat ceatceat ceatceat  
 ceatceat ceatceat ceatceat ceatceat  
 ceatceat ceatceat ceatceat ceatceat  
 ceatceat ceatceat ceatceat ceatceat  
 ceatceat ceatceat ceatceat ceatceat  
 ceatceat ceatceat ceatceat ceatceat  
 ceatceat ceatceat ceatceat ceatceat





2

Handwritten text in a narrow column on the left margin, likely a continuation from the previous page or a separate entry.

Handwritten text in a block at the top of the page, likely a title or introductory text for the botanical illustration.



Handwritten text in a block at the bottom of the page, likely a description or commentary on the plant shown in the illustration.



























93

















[illegible]



loellendg chodand ollerag pterdand deoglar allag olland ad gellend  
ollerag llerod qollod qollan ollad oth qollodg ollag gllendg qollod ad  
lleredg qolland g crad olland cecodg cecodg cettg gllendg othg dand og  
lleredg qollag othg cettg othredg othredg gllendg ollad ad gthg cag  
ollag cecodg odand cecg  
lleredg qollendg dand olerag pllerag cettar ollendg og cecodg cecodg  
dand qollad ogllendg llad ollad cecg llerag dand ollad othredg  
dand cecod qodand pterdand cettar dand ollad othredg  
lleredg llad og llerod llad qollendg dand qollendg qolla othredg  
dand cettg cecodg llendg cecodg ollad dand llad qollad  
pterdand cecodg llendg qollendg og and cettar ollad llad qollad  
cettg dand og othredg qolland cettg dand llendg dand  
dand qodand ollad othredg cettg



lleredg chodand ollerag pterdand deoglar allag olland ad gellend  
ollerag llerod qollod qollan ollad oth qollodg ollag gllendg qollod ad  
lleredg qolland g crad olland cecodg cecodg cettg gllendg othg dand og  
lleredg qollag othg cettg othredg othredg gllendg ollad ad gthg cag  
ollag cecodg odand cecg  
lleredg qollendg dand olerag pllerag cettar ollendg og cecodg cecodg  
dand qollad ogllendg llad ollad cecg llerag dand ollad othredg  
dand cecod qodand pterdand cettar dand ollad othredg  
lleredg llad og llerod llad qollendg dand qollendg qolla othredg  
dand cettg cecodg llendg cecodg ollad dand llad qollad  
pterdand cecodg llendg qollendg og and cettar ollad llad qollad  
cettg dand og othredg qolland cettg dand llendg dand  
dand qodand ollad othredg cettg



The text in the image is a form of Old English or Anglo-Saxon script, likely a list of names or descriptions of plants. The text is written in a cursive, handwritten style. The visible text includes:

The text in the image is a form of Old English or Anglo-Saxon script, likely a list of names or descriptions of plants. The text is written in a cursive, handwritten style. The visible text includes:





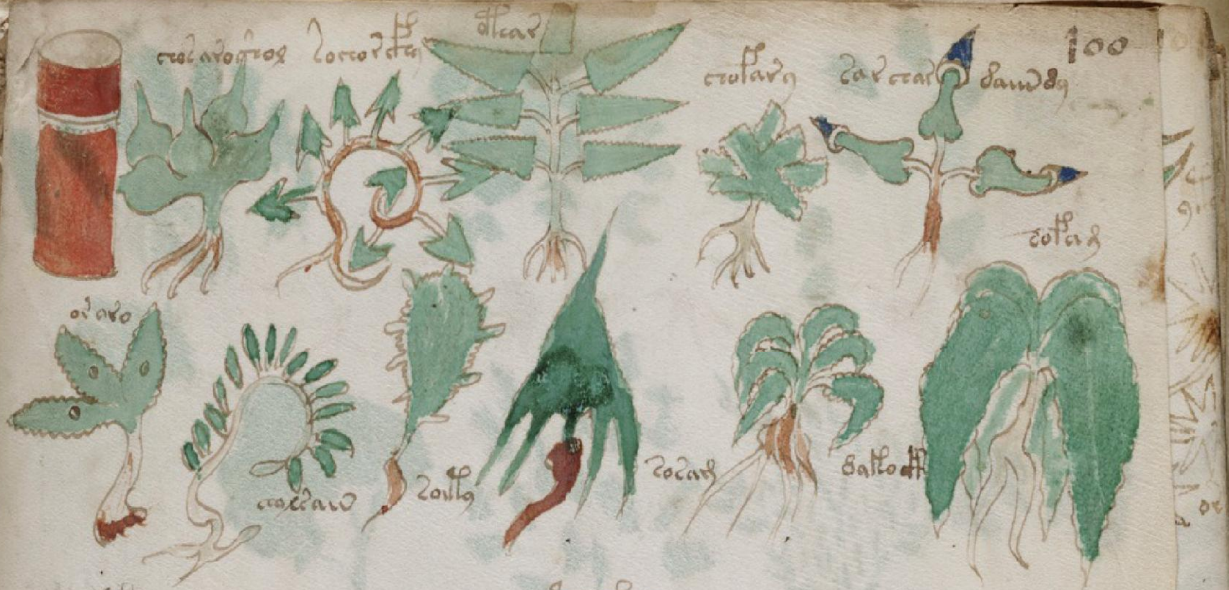












*H* *ccccc ccccc dddddd eeeee fffff ggggg hhhhh iiii*

[illegible]





















Handwritten text in a cursive script, likely a medieval or early modern language. The text is arranged in several lines, with some words appearing to be repeated or in a list-like format. The script is somewhat difficult to decipher due to its cursive nature and the ink quality.



Handwritten text in a cursive script, likely a medieval or early modern language. The text is arranged in several lines, with some words appearing to be repeated or in a list-like format. The script is somewhat difficult to decipher due to its cursive nature and the ink quality.